

A DETAIL - SOLAR PANEL ARRAY FOUNDATION
D1 NOT TO SCALE

CONSTRUCTION NOTES

1. MATERIALS, CONSTRUCTION, AND WORKMANSHIP SHALL BE IN ACCORDANCE WITH SUNRISE ENGINEERING, INC STANDARD SPECIFICATIONS.
2. USE CLASS 3500 CONCRETE MEETING 4000 PSI COMPRESSIVE STRENGTH.
3. PROVIDE 3 INCHES CONCRETE COVER OVER ALL REINFORCING STEEL EXCEPT WHERE NOTED OTHERWISE.
4. CHAMFER ALL EXPOSED CONCRETE CORNERS 1/4".
5. ALL REINFORCING STEEL SHALL BE GRADE 60 DEFORMED BILLET STEEL BARS CONFORMING TO AASHTO M31.
6. ALL STRUCTURAL STEEL SHALL CONFORM TO AASHTO M270 GRADE 50.
7. PROVIDE MATERIALS QUALITY CONTROL AND ACCEPTANCE IN ACCORDANCE WITH SUNRISE ENGINEERING MINIMUM SAMPLING AND TESTING REQUIREMENTS.
8. STRUCTURAL CERTIFICATION IS FOR FOUNDATION ONLY.

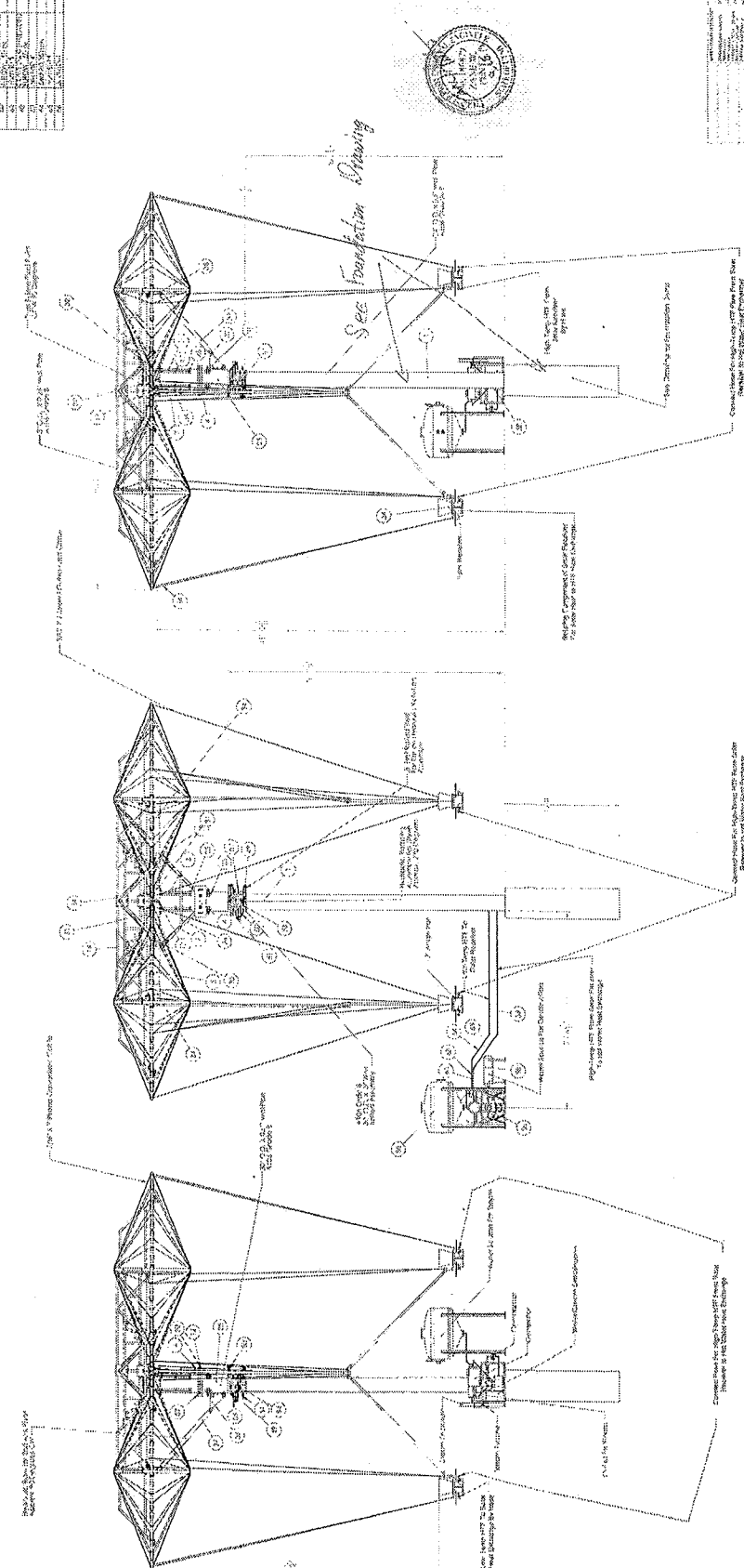
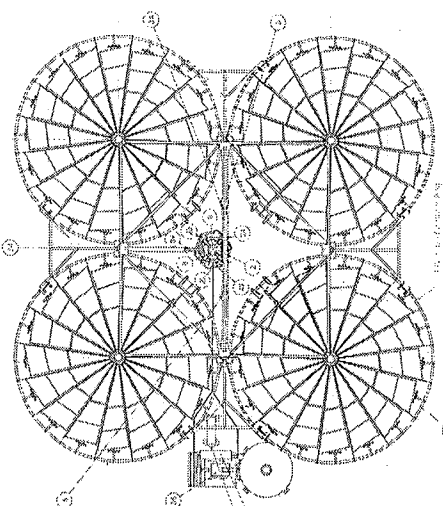
DESIGN

WIND 90 MPH EXP. C
 SEISMIC ZONE C



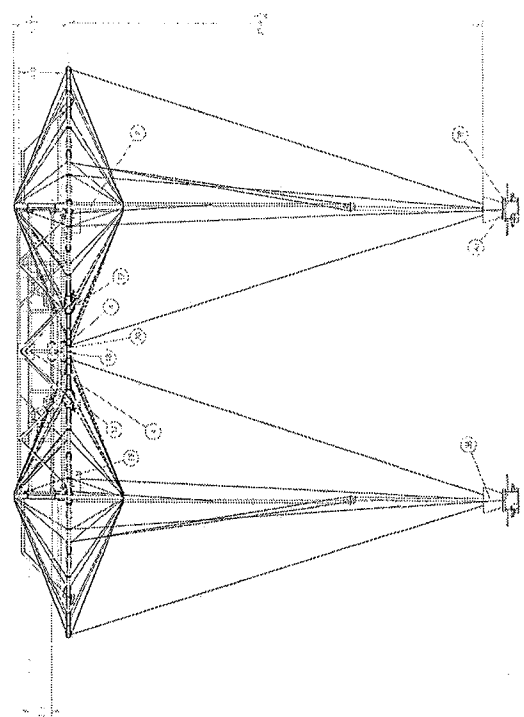
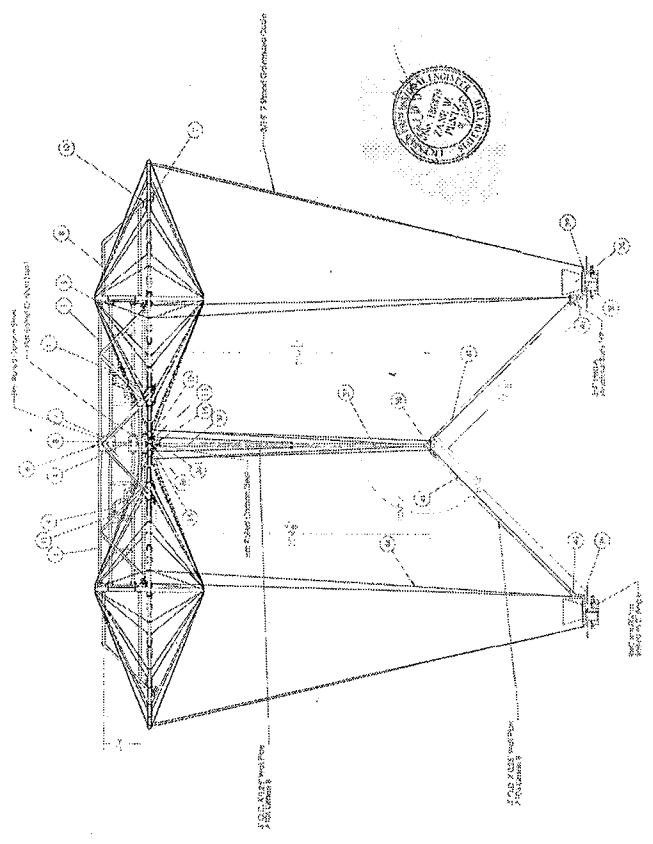
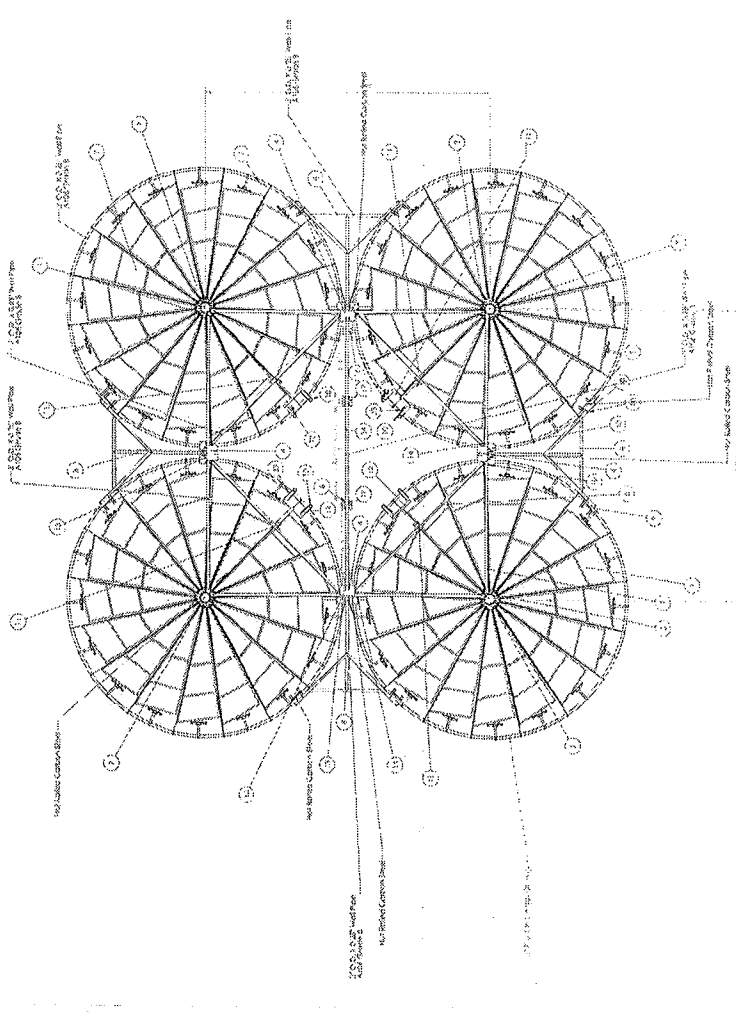
REV. NO.	COMMENT	DATE
<p>SUNRISE ENGINEERING 11 NORTH 300 WEST WASHINGTON, UTAH 84780 TEL: 435.632.8400 • FAX: 435.632.8416 www.sunrise-eng.com</p>		
FOUNDATION DETAIL		
NELDON JOHNSON SOLAR PANELS		
DESIGNED ZMP	DRAWN EN	CHECKED ZMP
SHEET NO. 1 of 1	D1	

NO.	REVISIONS
1	AS SHOWN
2	AS SHOWN
3	AS SHOWN
4	AS SHOWN
5	AS SHOWN
6	AS SHOWN
7	AS SHOWN
8	AS SHOWN
9	AS SHOWN
10	AS SHOWN
11	AS SHOWN
12	AS SHOWN
13	AS SHOWN
14	AS SHOWN
15	AS SHOWN
16	AS SHOWN
17	AS SHOWN
18	AS SHOWN
19	AS SHOWN
20	AS SHOWN
21	AS SHOWN
22	AS SHOWN
23	AS SHOWN
24	AS SHOWN
25	AS SHOWN
26	AS SHOWN
27	AS SHOWN
28	AS SHOWN
29	AS SHOWN
30	AS SHOWN
31	AS SHOWN
32	AS SHOWN
33	AS SHOWN
34	AS SHOWN
35	AS SHOWN
36	AS SHOWN
37	AS SHOWN
38	AS SHOWN
39	AS SHOWN
40	AS SHOWN
41	AS SHOWN
42	AS SHOWN
43	AS SHOWN
44	AS SHOWN
45	AS SHOWN
46	AS SHOWN
47	AS SHOWN
48	AS SHOWN
49	AS SHOWN
50	AS SHOWN
51	AS SHOWN
52	AS SHOWN
53	AS SHOWN
54	AS SHOWN
55	AS SHOWN
56	AS SHOWN
57	AS SHOWN
58	AS SHOWN
59	AS SHOWN
60	AS SHOWN
61	AS SHOWN
62	AS SHOWN
63	AS SHOWN
64	AS SHOWN
65	AS SHOWN
66	AS SHOWN
67	AS SHOWN
68	AS SHOWN
69	AS SHOWN
70	AS SHOWN
71	AS SHOWN
72	AS SHOWN
73	AS SHOWN
74	AS SHOWN
75	AS SHOWN
76	AS SHOWN
77	AS SHOWN
78	AS SHOWN
79	AS SHOWN
80	AS SHOWN
81	AS SHOWN
82	AS SHOWN
83	AS SHOWN
84	AS SHOWN
85	AS SHOWN
86	AS SHOWN
87	AS SHOWN
88	AS SHOWN
89	AS SHOWN
90	AS SHOWN
91	AS SHOWN
92	AS SHOWN
93	AS SHOWN
94	AS SHOWN
95	AS SHOWN
96	AS SHOWN
97	AS SHOWN
98	AS SHOWN
99	AS SHOWN
100	AS SHOWN



NO.	REVISIONS
1	AS SHOWN
2	AS SHOWN
3	AS SHOWN
4	AS SHOWN
5	AS SHOWN
6	AS SHOWN
7	AS SHOWN
8	AS SHOWN
9	AS SHOWN
10	AS SHOWN
11	AS SHOWN
12	AS SHOWN
13	AS SHOWN
14	AS SHOWN
15	AS SHOWN
16	AS SHOWN
17	AS SHOWN
18	AS SHOWN
19	AS SHOWN
20	AS SHOWN
21	AS SHOWN
22	AS SHOWN
23	AS SHOWN
24	AS SHOWN
25	AS SHOWN
26	AS SHOWN
27	AS SHOWN
28	AS SHOWN
29	AS SHOWN
30	AS SHOWN
31	AS SHOWN
32	AS SHOWN
33	AS SHOWN
34	AS SHOWN
35	AS SHOWN
36	AS SHOWN
37	AS SHOWN
38	AS SHOWN
39	AS SHOWN
40	AS SHOWN
41	AS SHOWN
42	AS SHOWN
43	AS SHOWN
44	AS SHOWN
45	AS SHOWN
46	AS SHOWN
47	AS SHOWN
48	AS SHOWN
49	AS SHOWN
50	AS SHOWN
51	AS SHOWN
52	AS SHOWN
53	AS SHOWN
54	AS SHOWN
55	AS SHOWN
56	AS SHOWN
57	AS SHOWN
58	AS SHOWN
59	AS SHOWN
60	AS SHOWN
61	AS SHOWN
62	AS SHOWN
63	AS SHOWN
64	AS SHOWN
65	AS SHOWN
66	AS SHOWN
67	AS SHOWN
68	AS SHOWN
69	AS SHOWN
70	AS SHOWN
71	AS SHOWN
72	AS SHOWN
73	AS SHOWN
74	AS SHOWN
75	AS SHOWN
76	AS SHOWN
77	AS SHOWN
78	AS SHOWN
79	AS SHOWN
80	AS SHOWN
81	AS SHOWN
82	AS SHOWN
83	AS SHOWN
84	AS SHOWN
85	AS SHOWN
86	AS SHOWN
87	AS SHOWN
88	AS SHOWN
89	AS SHOWN
90	AS SHOWN
91	AS SHOWN
92	AS SHOWN
93	AS SHOWN
94	AS SHOWN
95	AS SHOWN
96	AS SHOWN
97	AS SHOWN
98	AS SHOWN
99	AS SHOWN
100	AS SHOWN

REV	DATE	BY	CHKD	DESCRIPTION
1	10/1/18
2	10/1/18
3	10/1/18
4	10/1/18
5	10/1/18
6	10/1/18
7	10/1/18
8	10/1/18
9	10/1/18
10	10/1/18
11	10/1/18
12	10/1/18
13	10/1/18
14	10/1/18
15	10/1/18
16	10/1/18
17	10/1/18
18	10/1/18
19	10/1/18
20	10/1/18
21	10/1/18
22	10/1/18
23	10/1/18
24	10/1/18
25	10/1/18
26	10/1/18
27	10/1/18
28	10/1/18
29	10/1/18
30	10/1/18
31	10/1/18
32	10/1/18
33	10/1/18
34	10/1/18
35	10/1/18
36	10/1/18
37	10/1/18
38	10/1/18
39	10/1/18
40	10/1/18
41	10/1/18
42	10/1/18
43	10/1/18
44	10/1/18
45	10/1/18
46	10/1/18
47	10/1/18
48	10/1/18
49	10/1/18
50	10/1/18
51	10/1/18
52	10/1/18
53	10/1/18
54	10/1/18
55	10/1/18
56	10/1/18
57	10/1/18
58	10/1/18
59	10/1/18
60	10/1/18
61	10/1/18
62	10/1/18
63	10/1/18
64	10/1/18
65	10/1/18
66	10/1/18
67	10/1/18
68	10/1/18
69	10/1/18
70	10/1/18
71	10/1/18
72	10/1/18
73	10/1/18
74	10/1/18
75	10/1/18
76	10/1/18
77	10/1/18
78	10/1/18
79	10/1/18
80	10/1/18
81	10/1/18
82	10/1/18
83	10/1/18
84	10/1/18
85	10/1/18
86	10/1/18
87	10/1/18
88	10/1/18
89	10/1/18
90	10/1/18
91	10/1/18
92	10/1/18
93	10/1/18
94	10/1/18
95	10/1/18
96	10/1/18
97	10/1/18
98	10/1/18
99	10/1/18
100	10/1/18

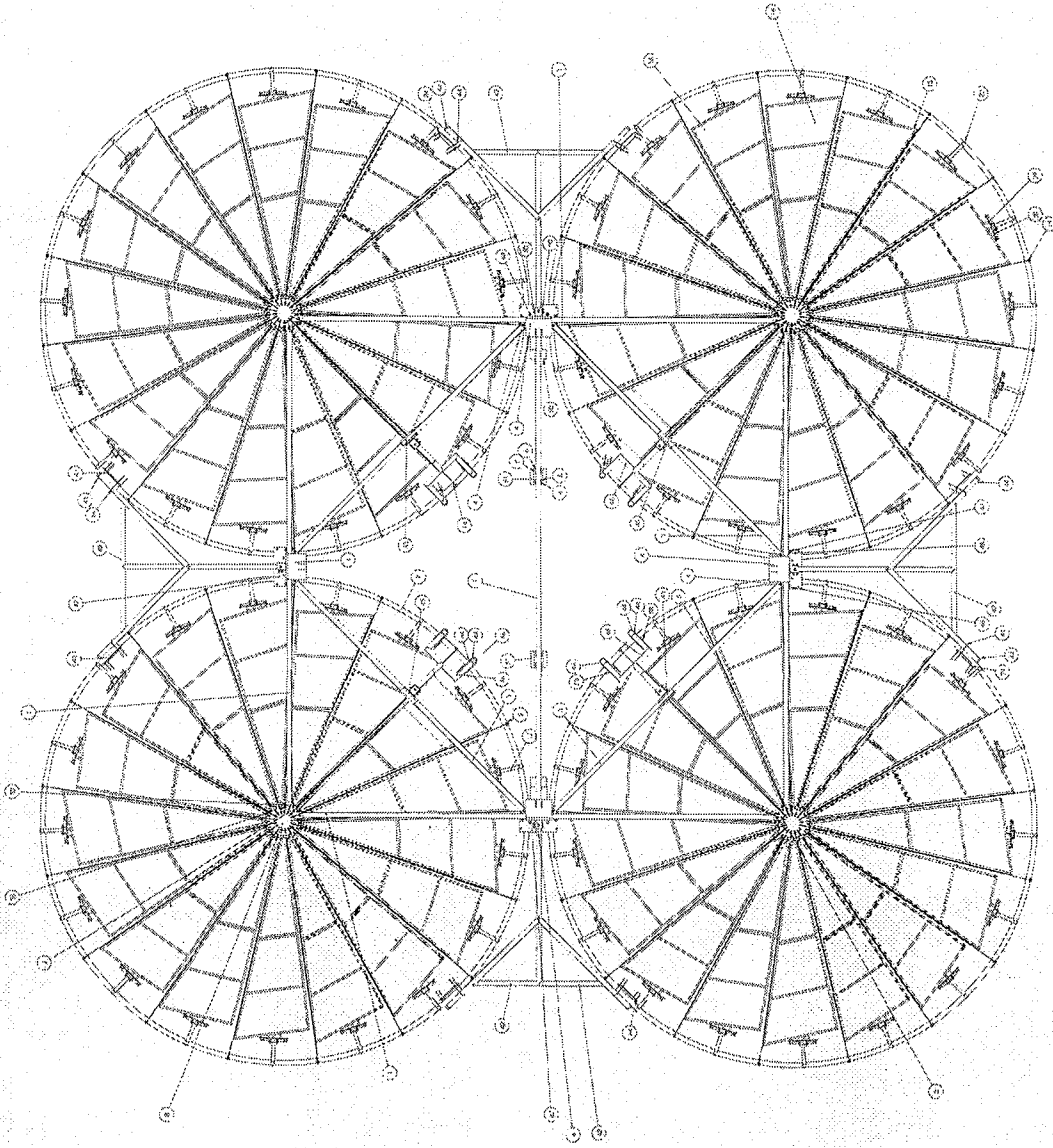


6 POD ASSEMBLY
 Solar.003.02-A6
 04/22/19

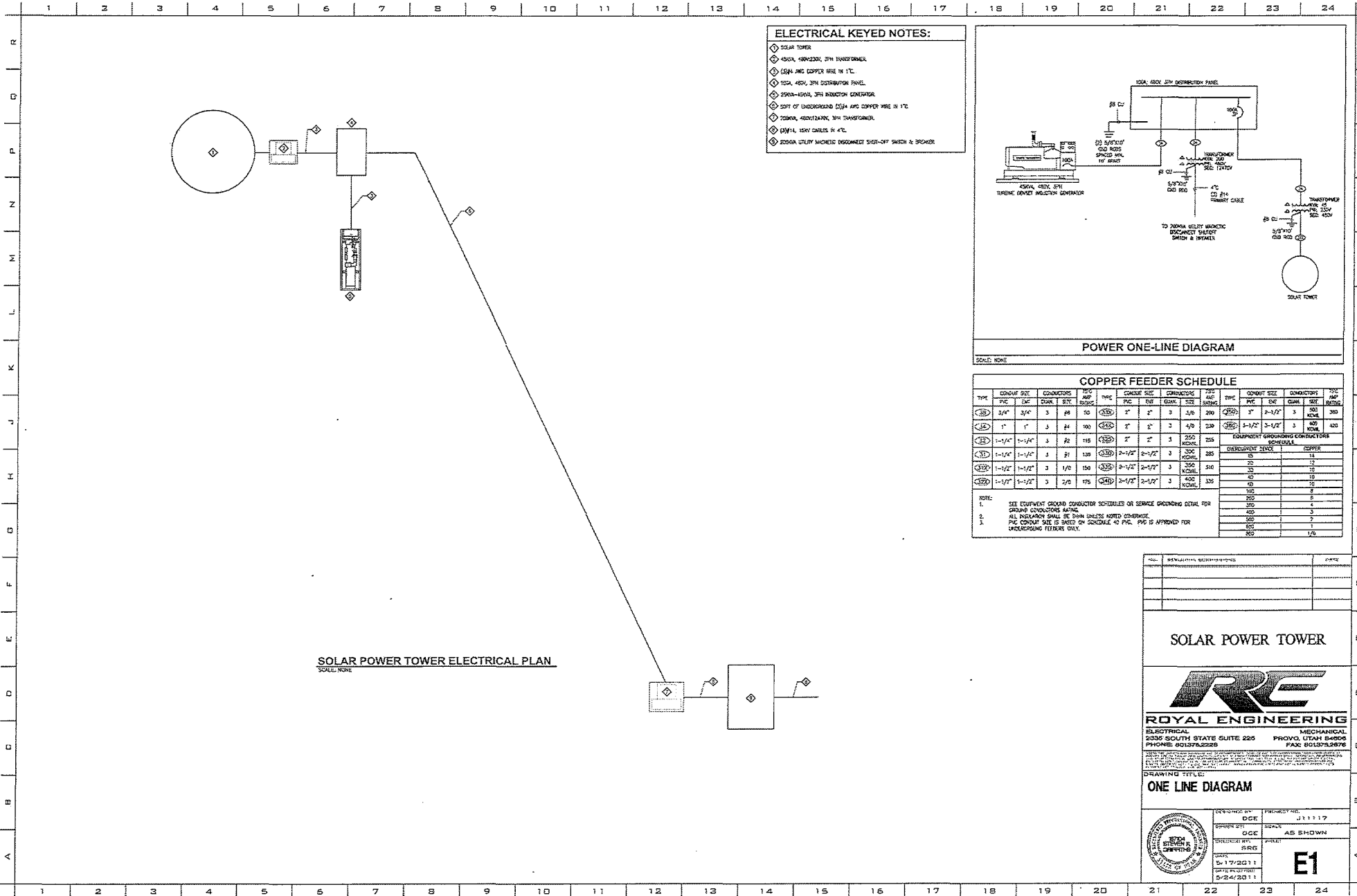
NO.	DESCRIPTION	QTY	UNIT	PRICE	TOTAL
1
2
3
4
5
6
7
8
9
10
11
12
13
14
15
16
17
18
19
20
21
22
23
24
25
26
27
28
29
30
31
32
33
34
35
36
37
38
39
40
41
42
43
44
45
46
47
48
49
50



Solar 006.02-A5
E
Date: 12/31/2018

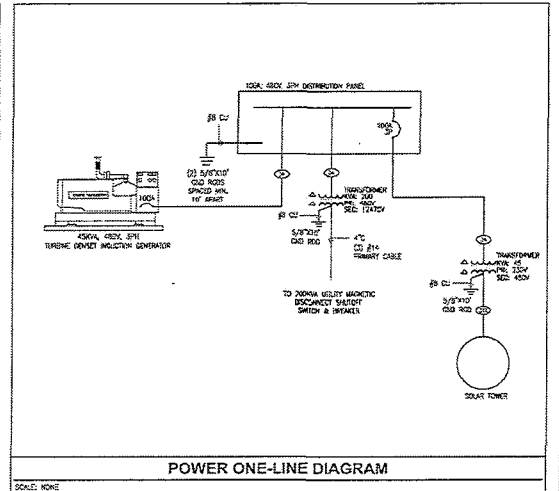


TOP



SOLAR POWER TOWER ELECTRICAL PLAN
SCALE: NONE

- ELECTRICAL KEYED NOTES:**
- ◇ SOLAR TOWER
 - ◇ 450VA, 480V/240V, 3PH TRANSFORMER
 - ◇ 150PH AND COPPER WIRE IN 1" TC
 - ◇ 100A, 480V, 3PH DISTRIBUTION PANEL
 - ◇ 250VA-450VA, 3PH DISTRIBUTION PANEL
 - ◇ SOFT OF UNDERGROUND COPPER AND COPPER WIRE IN 1" TC
 - ◇ 750KVA, 480V/240V, 3PH TRANSFORMER
 - ◇ 150PH, 15KV CABLES IN 4" TC
 - ◇ 250VA UTILITY MAGNETIC INDUCED SIGHT-OFF SWITCH & BREAKER



POWER ONE-LINE DIAGRAM
SCALE: NONE

COPPER FEEDER SCHEDULE

TYPE	CONDUIT SIZE	CONDUCTORS	WEG AMP	TYPE	CONDUIT SIZE	CONDUCTORS	WEG AMP	TYPE	CONDUIT SIZE	CONDUCTORS	WEG AMP
PVC	INCH	QUAN.	SIZE	PVC	PVC	INCH	QUAN.	SIZE	PVC	INCH	QUAN.
CS	3/4"	3/4"	3	#8	10	CS	2"	2"	3	3/8"	200
CS	1"	1"	3	#4	100	CS	2"	2"	3	3/8"	200
CS	1-1/4"	1-1/4"	3	#2	115	CS	2"	2"	3	3/8"	200
CS	1-1/2"	1-1/2"	3	#1	130	CS	2-1/2"	2-1/2"	3	3/8"	200
CS	1-1/2"	1-1/2"	3	1/0	150	CS	2-1/2"	2-1/2"	3	3/8"	200
CS	1-1/2"	1-1/2"	3	2/0	175	CS	2-1/2"	2-1/2"	3	3/8"	200

EQUIPMENT GROUNDING CONDUCTORS SCHEDULE	
TYPE	CONDUIT SIZE
CS	1-1/2"
CS	2"
CS	2-1/2"
CS	3"
CS	3-1/2"
CS	4"
CS	4-1/2"
CS	5"
CS	5-1/2"
CS	6"
CS	6-1/2"
CS	7"
CS	7-1/2"
CS	8"
CS	8-1/2"
CS	9"
CS	9-1/2"
CS	10"
CS	10-1/2"
CS	11"
CS	11-1/2"
CS	12"
CS	12-1/2"
CS	13"
CS	13-1/2"
CS	14"
CS	14-1/2"
CS	15"
CS	15-1/2"
CS	16"
CS	16-1/2"
CS	17"
CS	17-1/2"
CS	18"
CS	18-1/2"
CS	19"
CS	19-1/2"
CS	20"
CS	20-1/2"
CS	21"
CS	21-1/2"
CS	22"
CS	22-1/2"
CS	23"
CS	23-1/2"
CS	24"
CS	24-1/2"
CS	25"
CS	25-1/2"
CS	26"
CS	26-1/2"
CS	27"
CS	27-1/2"
CS	28"
CS	28-1/2"
CS	29"
CS	29-1/2"
CS	30"
CS	30-1/2"
CS	31"
CS	31-1/2"
CS	32"
CS	32-1/2"
CS	33"
CS	33-1/2"
CS	34"
CS	34-1/2"
CS	35"
CS	35-1/2"
CS	36"
CS	36-1/2"
CS	37"
CS	37-1/2"
CS	38"
CS	38-1/2"
CS	39"
CS	39-1/2"
CS	40"
CS	40-1/2"
CS	41"
CS	41-1/2"
CS	42"
CS	42-1/2"
CS	43"
CS	43-1/2"
CS	44"
CS	44-1/2"
CS	45"
CS	45-1/2"
CS	46"
CS	46-1/2"
CS	47"
CS	47-1/2"
CS	48"
CS	48-1/2"
CS	49"
CS	49-1/2"
CS	50"
CS	50-1/2"
CS	51"
CS	51-1/2"
CS	52"
CS	52-1/2"
CS	53"
CS	53-1/2"
CS	54"
CS	54-1/2"
CS	55"
CS	55-1/2"
CS	56"
CS	56-1/2"
CS	57"
CS	57-1/2"
CS	58"
CS	58-1/2"
CS	59"
CS	59-1/2"
CS	60"
CS	60-1/2"
CS	61"
CS	61-1/2"
CS	62"
CS	62-1/2"
CS	63"
CS	63-1/2"
CS	64"
CS	64-1/2"
CS	65"
CS	65-1/2"
CS	66"
CS	66-1/2"
CS	67"
CS	67-1/2"
CS	68"
CS	68-1/2"
CS	69"
CS	69-1/2"
CS	70"
CS	70-1/2"
CS	71"
CS	71-1/2"
CS	72"
CS	72-1/2"
CS	73"
CS	73-1/2"
CS	74"
CS	74-1/2"
CS	75"
CS	75-1/2"
CS	76"
CS	76-1/2"
CS	77"
CS	77-1/2"
CS	78"
CS	78-1/2"
CS	79"
CS	79-1/2"
CS	80"
CS	80-1/2"
CS	81"
CS	81-1/2"
CS	82"
CS	82-1/2"
CS	83"
CS	83-1/2"
CS	84"
CS	84-1/2"
CS	85"
CS	85-1/2"
CS	86"
CS	86-1/2"
CS	87"
CS	87-1/2"
CS	88"
CS	88-1/2"
CS	89"
CS	89-1/2"
CS	90"
CS	90-1/2"
CS	91"
CS	91-1/2"
CS	92"
CS	92-1/2"
CS	93"
CS	93-1/2"
CS	94"
CS	94-1/2"
CS	95"
CS	95-1/2"
CS	96"
CS	96-1/2"
CS	97"
CS	97-1/2"
CS	98"
CS	98-1/2"
CS	99"
CS	99-1/2"
CS	100"

NOTE:
 1. SEE EQUIPMENT GROUND CONDUCTOR SCHEDULES OR SERVICE GROUNDING DETAIL FOR GROUND CONDUCTOR SIZING.
 2. ALL INSULATION SHALL BE 30PH UNLESS NOTED OTHERWISE.
 3. PVC CONDUIT SIZE IS BASED ON SCHEDULE 40 PVC. PVC IS APPROVED FOR UNDERGROUND FEEDERS ONLY.

RE
ROYAL ENGINEERING
 ELECTRICAL MECHANICAL
 2332 SOUTH STATE SUITE 225 PROVO, UTAH 84606
 PHONE: 801376.2226 FAX: 801376.2676

DRAWING TITLE:
ONE LINE DIAGRAM

DESIGNED BY: OGE
 DRAWN BY: SRS
 CHECKED BY: SRS
 DATE: 5/24/2011

PERMIT NO.: 211117
 SCALE: AS SHOWN
E1



N
SCALE 1" = 400'

6640793.05
1253475.94
E 1/4 COR. SEC. 3,
T17S, R8W, S1M
ALUMINUM CAP

6640797.22
1253484.26
W 1/4 COR. SEC. 3,
T17S, R8W, S1M
ALUMINUM CAP

6940793.05
1253475.94
E 1/4 COR. SEC. 3,
T17S, R8W, S1M
ALUMINUM CAP

6940797.22
1253484.26
W 1/4 COR. SEC. 3,
T17S, R8W, S1M
ALUMINUM CAP

6940793.05
1253475.94
E 1/4 COR. SEC. 3,
T17S, R8W, S1M
ALUMINUM CAP

6940797.22
1253484.26
W 1/4 COR. SEC. 3,
T17S, R8W, S1M
ALUMINUM CAP

6940793.05
1253475.94
E 1/4 COR. SEC. 3,
T17S, R8W, S1M
ALUMINUM CAP

6940797.22
1253484.26
W 1/4 COR. SEC. 3,
T17S, R8W, S1M
ALUMINUM CAP

6940793.05
1253475.94
E 1/4 COR. SEC. 3,
T17S, R8W, S1M
ALUMINUM CAP

6940797.22
1253484.26
W 1/4 COR. SEC. 3,
T17S, R8W, S1M
ALUMINUM CAP

6940793.05
1253475.94
E 1/4 COR. SEC. 3,
T17S, R8W, S1M
ALUMINUM CAP

6940797.22
1253484.26
W 1/4 COR. SEC. 3,
T17S, R8W, S1M
ALUMINUM CAP

6940793.05
1253475.94
E 1/4 COR. SEC. 3,
T17S, R8W, S1M
ALUMINUM CAP

6940797.22
1253484.26
W 1/4 COR. SEC. 3,
T17S, R8W, S1M
ALUMINUM CAP

6940793.05
1253475.94
E 1/4 COR. SEC. 3,
T17S, R8W, S1M
ALUMINUM CAP

6940797.22
1253484.26
W 1/4 COR. SEC. 3,
T17S, R8W, S1M
ALUMINUM CAP

NOTE:
BASIS OF BEARING AND DISTANCE, UTAH CENTRAL STATE PLANE
COORDINATES SHOWN ARE UTAH CENTRAL STATE PLANE
ON FILE AT MILLARD COUNTY RECORDERS OFFICE.

MILLARD COUNTY SURVEY MONUMENTS - ALUMINUM CAPS

SURVEYOR'S CERTIFICATE

I, JAMES D. EDWARDS A REGISTERED PROFESSIONAL LAND
SURVEYOR HOLD LICENSE NO. 16252 AS PRESCRIBED BY THE
STATE OF UTAH CERTIFY THAT I HAVE SURVEYED SECTION 11,
T17S, R8W, S1M AND BROKE THE SECTION DOWN ACCORDING TO
THE BLM MANUAL OF SURVEYING. THE COORDINATES SHOWN ARE
DEC. 14, 2010

JAMES D. EDWARDS, PLS 162522



NARRATIVE:

I FOUND THE MONUMENTS MARKING THE BOUNDARY OF SECTION 11,
T17S, R8W, S1M AND BROKE THE SECTION DOWN ACCORDING TO
THE BLM MANUAL OF SURVEYING. THE COORDINATES SHOWN ARE
UTAH CENTRAL STATE PLANE.

NELSON JOHNSON

SEGREGATION PATTERN

SOUTH ONE HALF SEC. 3,
T17S, R8W, S1M
DEC. 14, 2010
SCALE 1" = 400'

EDWARDS SURVEYING
P.O. BOX 46
DELTA, UTAH 84824
435-664-2067

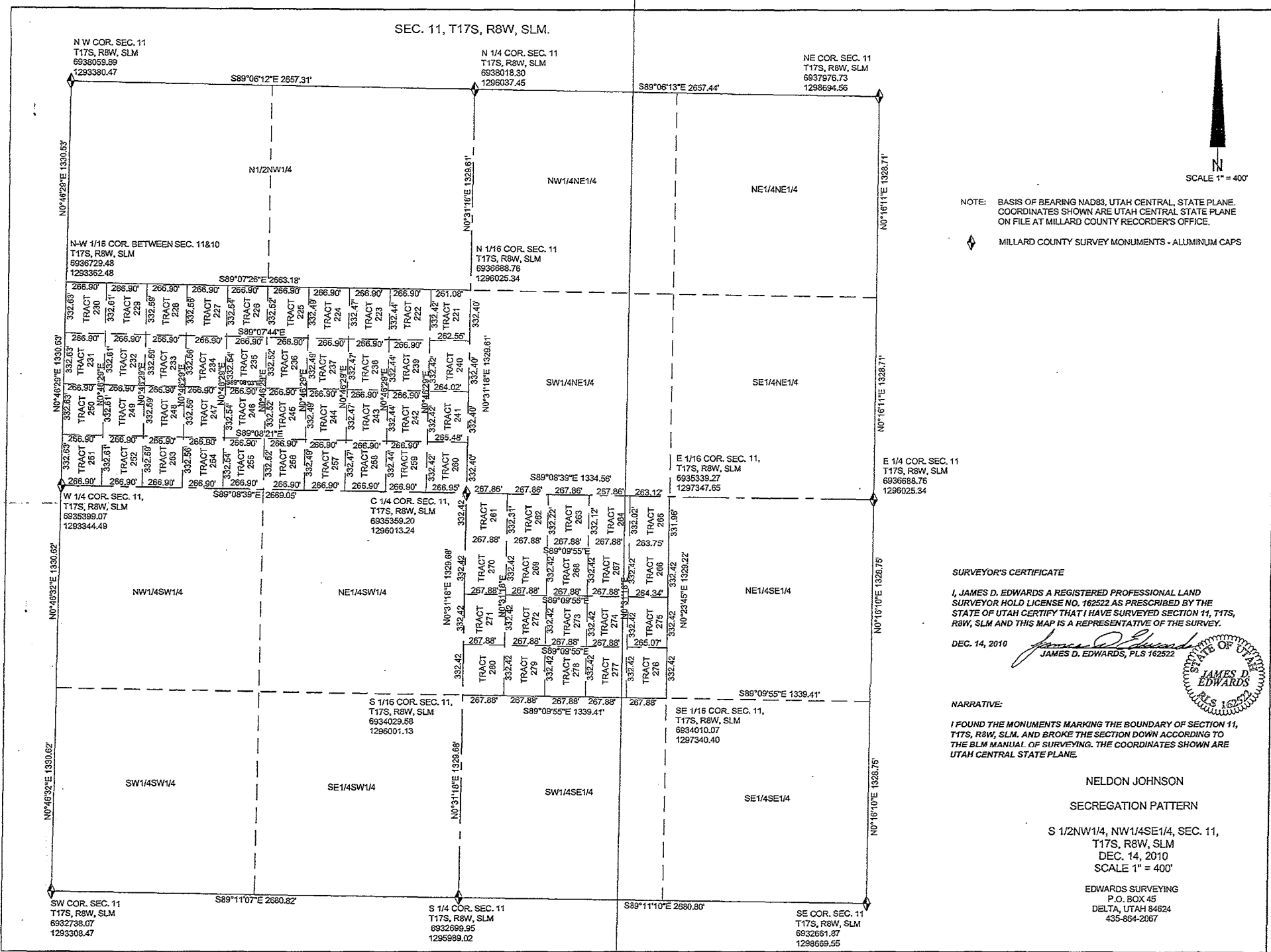
SE COR. SEC. 3,
T17S, R8W, S1M
ALUMINUM CAP
6633097.26
12533804.47

808°11'38"E 2655.90'

S 1/4 COR. SEC. 3,
T17S, R8W, S1M
ALUMINUM CAP
6933097.26
1260724.83

N 89°11'14"W 2656.96'

SW COR. SEC. 3,
T17S, R8W, S1M
ALUMINUM CAP
6933134.59
1269059.13



NOTE: BASIS OF BEARING NAD83, UTAH CENTRAL, STATE PLANE. COORDINATES SHOWN ARE UTAH CENTRAL STATE PLANE ON FILE AT MILLARD COUNTY RECORDER'S OFFICE.

◆ MILLARD COUNTY SURVEY MONUMENTS - ALUMINUM CAPS

SURVEYOR'S CERTIFICATE

I, JAMES D. EDWARDS A REGISTERED PROFESSIONAL LAND SURVEYOR HOLD LICENSE NO. 162522 AS PRESCRIBED BY THE STATE OF UTAH CERTIFY THAT I HAVE SURVEYED SECTION 11, T17S, R8W, SLM AND THIS MAP IS A REPRESENTATIVE OF THE SURVEY.

DEC. 14, 2010

James D. Edwards
 JAMES D. EDWARDS, PLS 162522

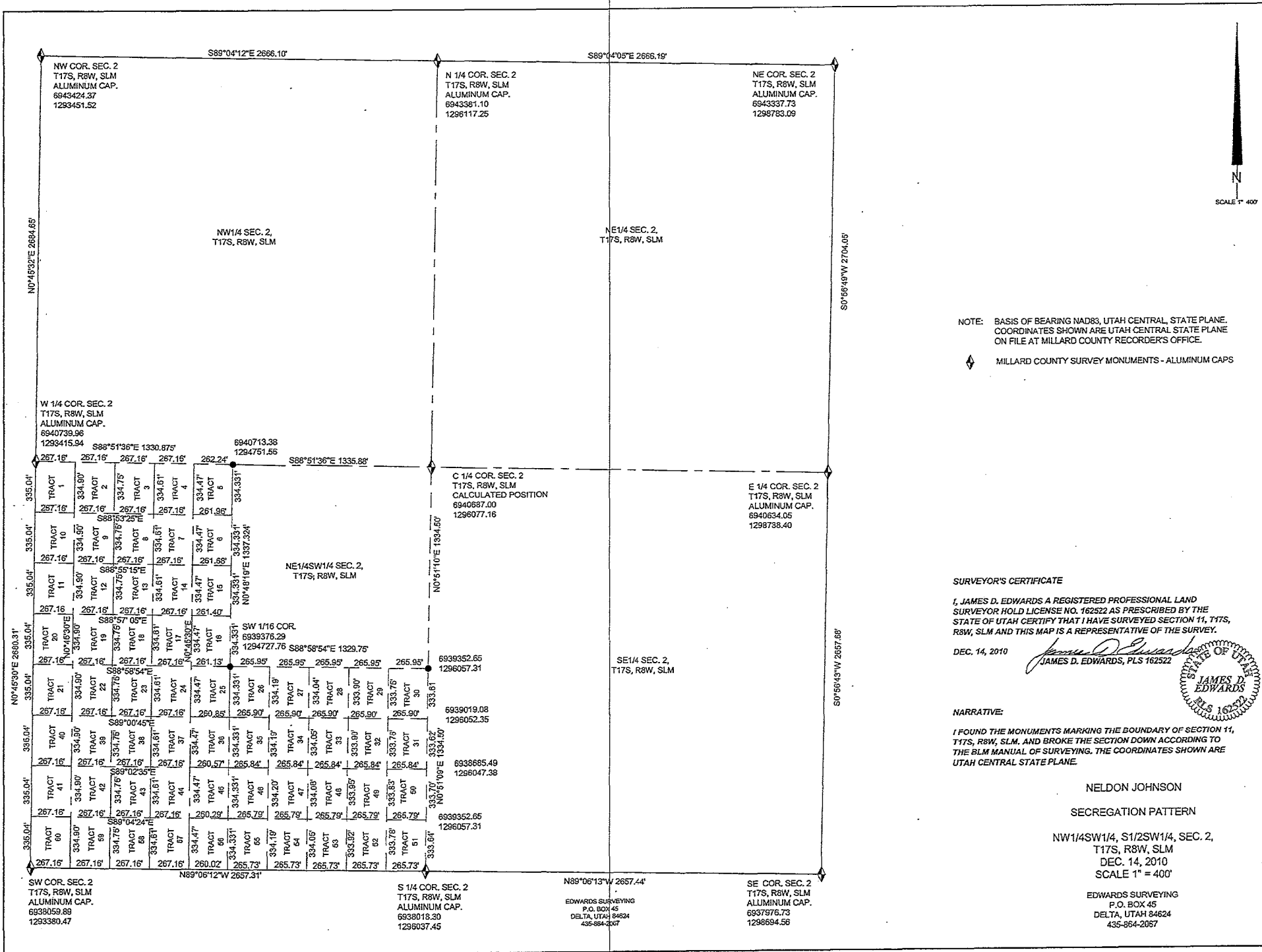
NARRATIVE:

I FOUND THE MONUMENTS MARKING THE BOUNDARY OF SECTION 11, T17S, R8W, SLM. AND BROKE THE SECTION DOWN ACCORDING TO THE BLM MANUAL OF SURVEYING. THE COORDINATES SHOWN ARE UTAH CENTRAL STATE PLANE.

NELDON JOHNSON
 SEGREGATION PATTERN
 S 1/2NW1/4, NW1/4SE1/4, SEC. 11,
 T17S, R8W, SLM
 DEC. 14, 2010
 SCALE 1" = 400'

EDWARDS SURVEYING
 P.O. BOX 45
 DELTA, UTAH 84624
 435-864-2067

8



NOTE: BASIS OF BEARING NAD83, UTAH CENTRAL, STATE PLANE. COORDINATES SHOWN ARE UTAH CENTRAL STATE PLANE ON FILE AT MILLARD COUNTY RECORDER'S OFFICE.

◆ MILLARD COUNTY SURVEY MONUMENTS - ALUMINUM CAPS

SURVEYOR'S CERTIFICATE

I, JAMES D. EDWARDS A REGISTERED PROFESSIONAL LAND SURVEYOR HOLD LICENSE NO. 162522 AS PRESCRIBED BY THE STATE OF UTAH CERTIFY THAT I HAVE SURVEYED SECTION 11, T17S, R8W, SLM AND THIS MAP IS A REPRESENTATIVE OF THE SURVEY.

DEC. 14, 2010

James D. Edwards
 JAMES D. EDWARDS
 LICENSE NO. 162522
 STATE OF UTAH

NARRATIVE:

I FOUND THE MONUMENTS MARKING THE BOUNDARY OF SECTION 11, T17S, R8W, SLM, AND BROKE THE SECTION DOWN ACCORDING TO THE BLM MANUAL OF SURVEYING. THE COORDINATES SHOWN ARE UTAH CENTRAL STATE PLANE.

NELDON JOHNSON

SEGREGATION PATTERN

NW1/4SW1/4, S1/2SW1/4, SEC. 2,
 T17S, R8W, SLM
 DEC. 14, 2010
 SCALE 1" = 400'

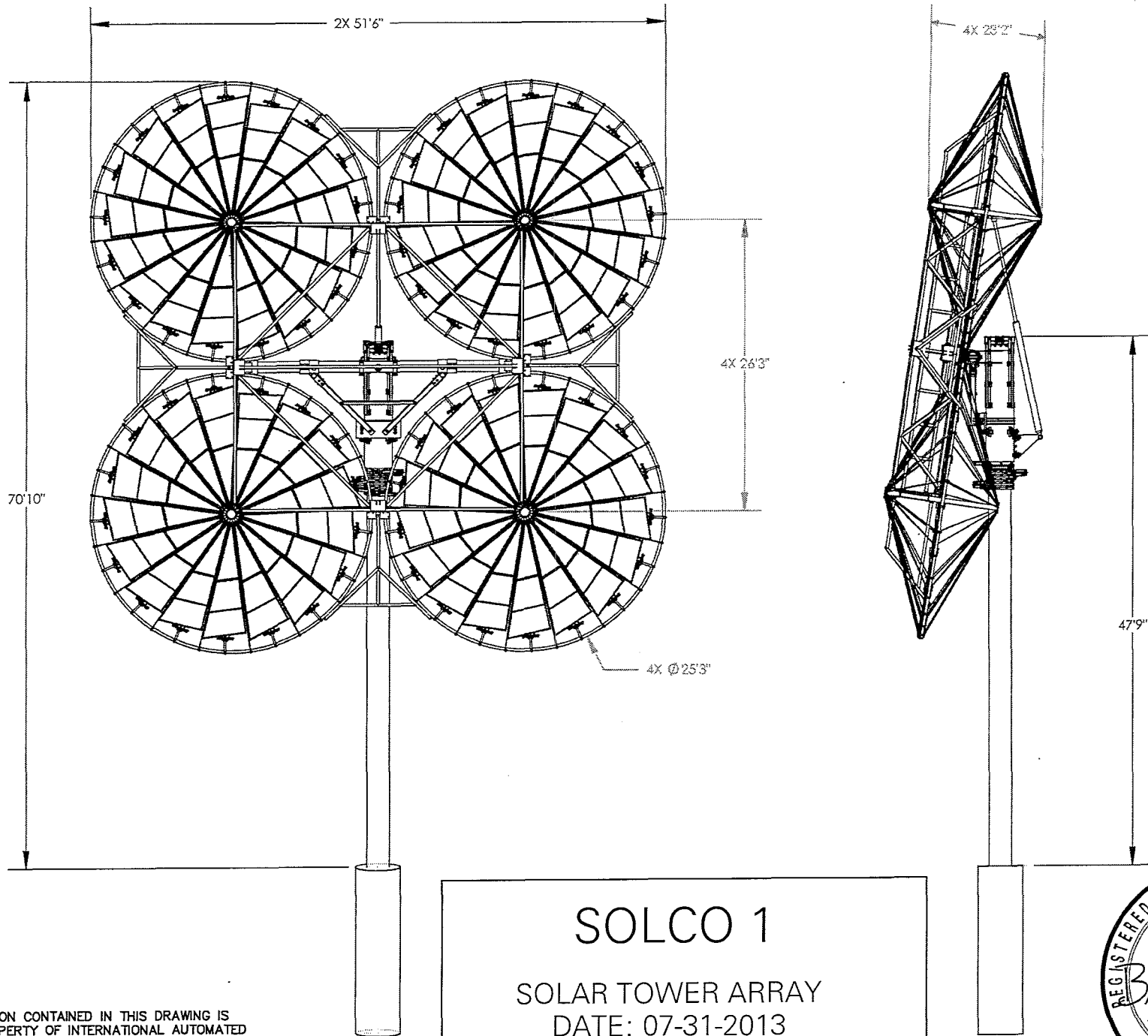
EDWARDS SURVEYING
 P.O. BOX 45
 DELTA, UTAH 84624
 435-864-2057

EDWARDS SURVEYING
 P.O. BOX 45
 DELTA, UTAH 84624
 435-864-2057

SE COR. SEC. 2
 T17S, R8W, SLM
 ALUMINUM CAP.
 69397976.73
 1298694.56

S 1/4 COR. SEC. 2
 T17S, R8W, SLM
 ALUMINUM CAP.
 6938019.20
 1298037.45

SW COR. SEC. 2
 T17S, R8W, SLM
 ALUMINUM CAP.
 6938059.89
 1299380.47

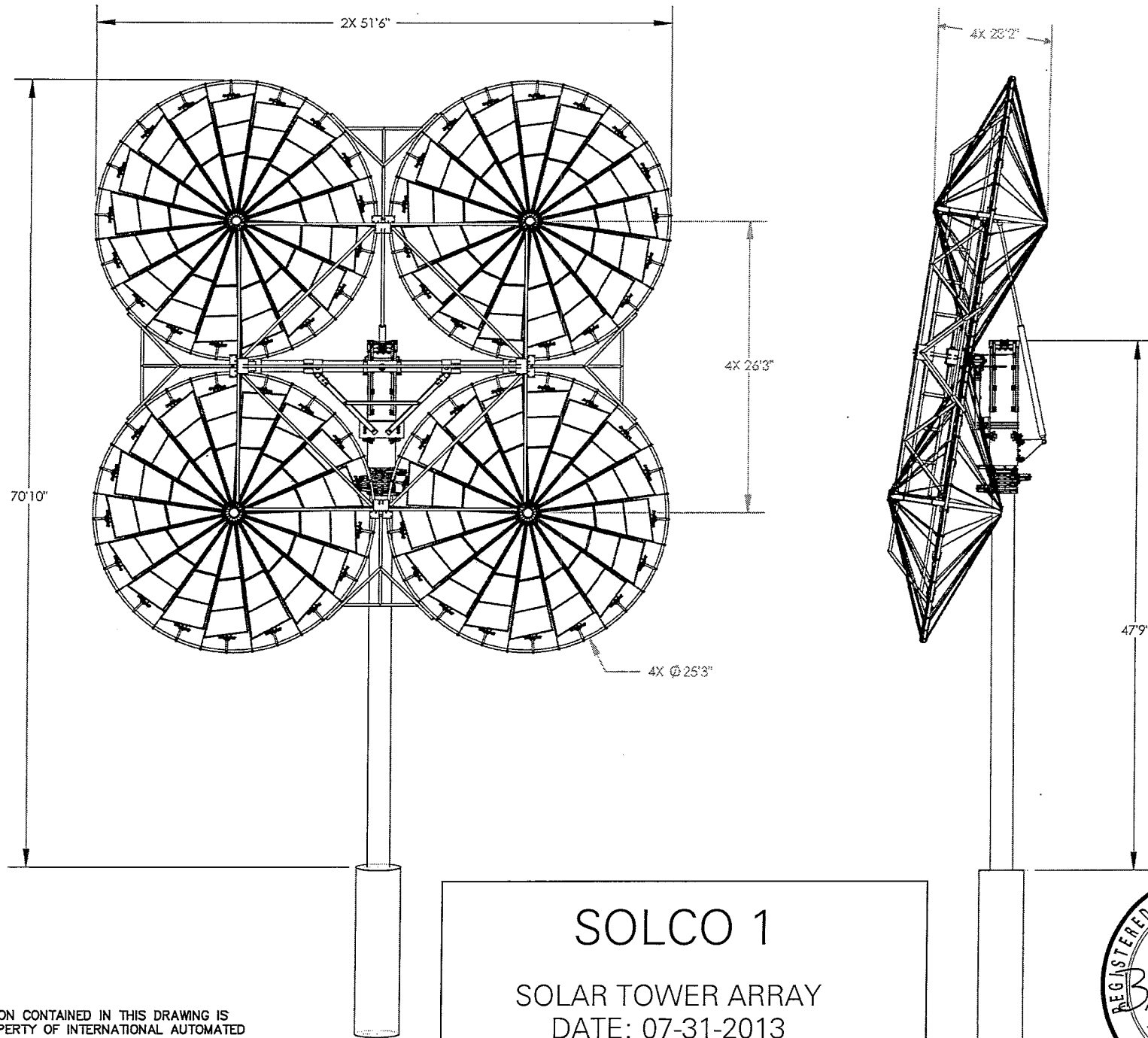


SOLCO 1
 SOLAR TOWER ARRAY
 DATE: 07-31-2013
 TOWER NUMBER: DELTA-002



THE INFORMATION CONTAINED IN THIS DRAWING IS
 THE SOLE PROPERTY OF INTERNATIONAL AUTOMATED
 SYSTEMS. ANY REPRODUCTION IN PART OR AS A
 WHOLE WITHOUT THE WRITTEN PERMISSION OF
 INTERNATIONAL AUTOMATED SYSTEMS IS PROHIBITED.

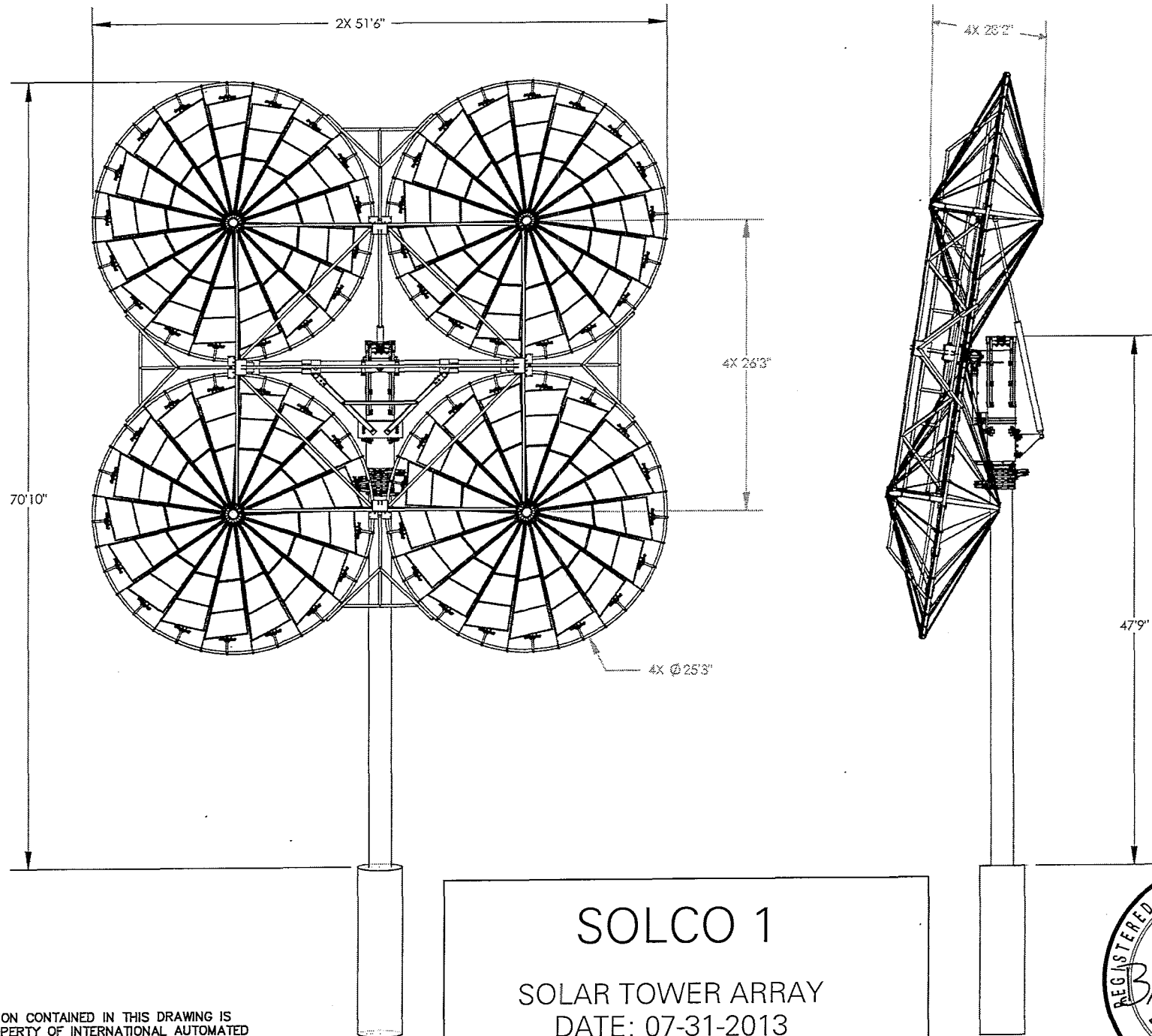
10



SOLCO 1
SOLAR TOWER ARRAY
DATE: 07-31-2013
TOWER NUMBER: DELTA-003

THE INFORMATION CONTAINED IN THIS DRAWING IS THE SOLE PROPERTY OF INTERNATIONAL AUTOMATED SYSTEMS. ANY REPRODUCTION IN PART OR AS A WHOLE WITHOUT THE WRITTEN PERMISSION OF INTERNATIONAL AUTOMATED SYSTEMS IS PROHIBITED.



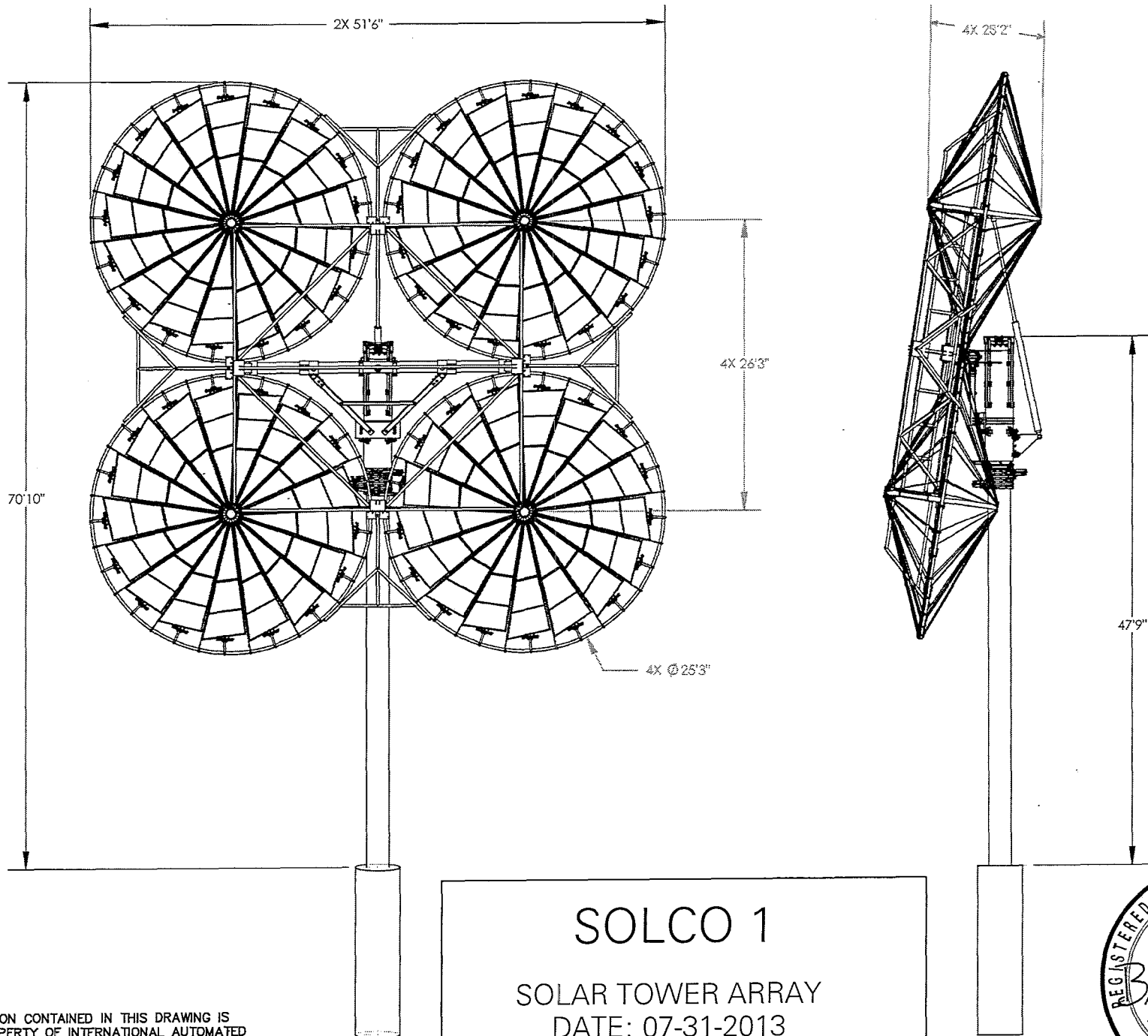


SOLCO 1
 SOLAR TOWER ARRAY
 DATE: 07-31-2013
 TOWER NUMBER: DELTA-004

THE INFORMATION CONTAINED IN THIS DRAWING IS
 THE SOLE PROPERTY OF INTERNATIONAL AUTOMATED
 SYSTEMS. ANY REPRODUCTION IN PART OR AS A
 WHOLE WITHOUT THE WRITTEN PERMISSION OF
 INTERNATIONAL AUTOMATED SYSTEMS IS PROHIBITED.



12

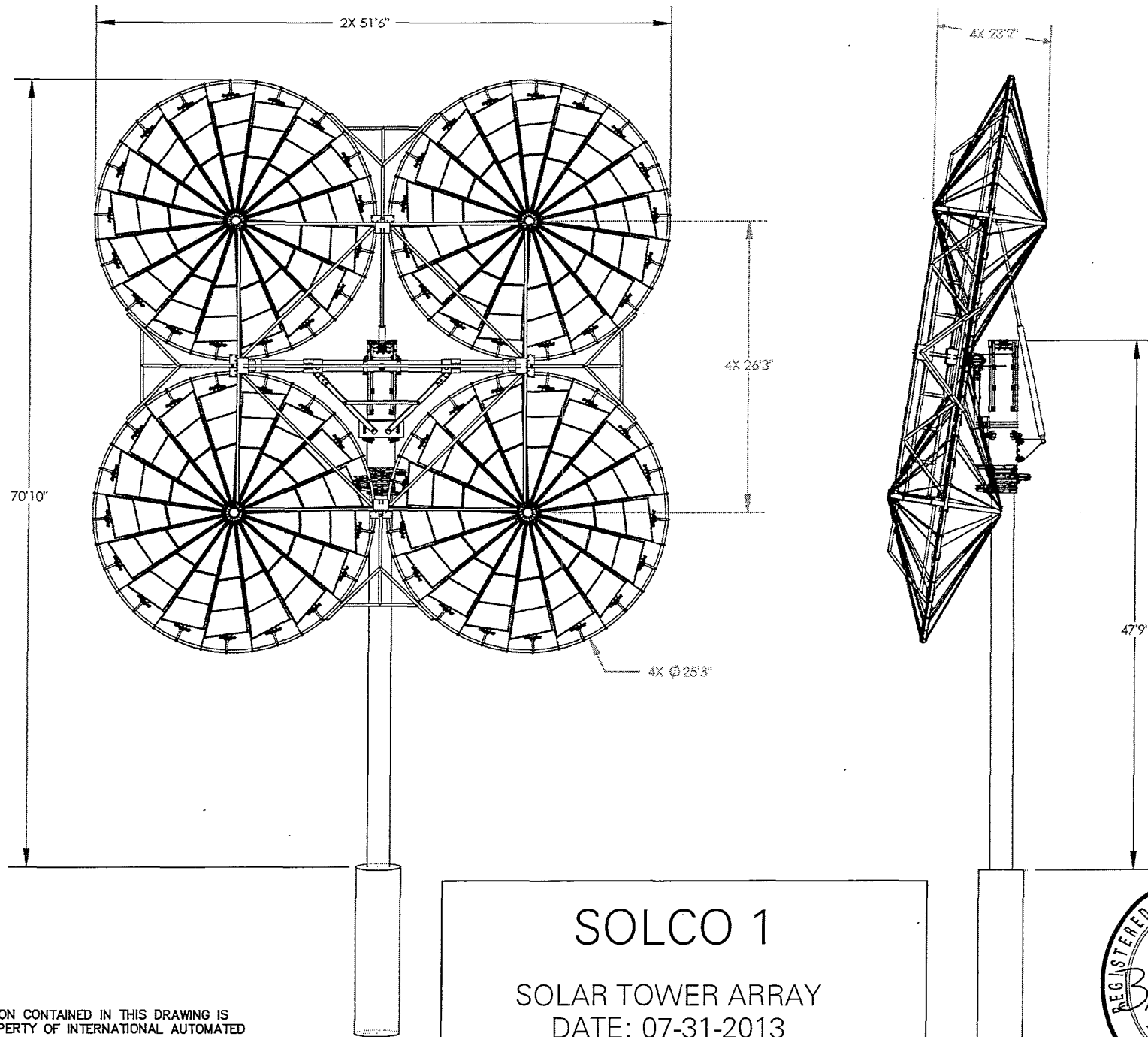


SOLCO 1
 SOLAR TOWER ARRAY
 DATE: 07-31-2013
 TOWER NUMBER: DELTA-005



THE INFORMATION CONTAINED IN THIS DRAWING IS
 THE SOLE PROPERTY OF INTERNATIONAL AUTOMATED
 SYSTEMS. ANY REPRODUCTION IN PART OR AS A
 WHOLE WITHOUT THE WRITTEN PERMISSION OF
 INTERNATIONAL AUTOMATED SYSTEMS IS PROHIBITED.

12

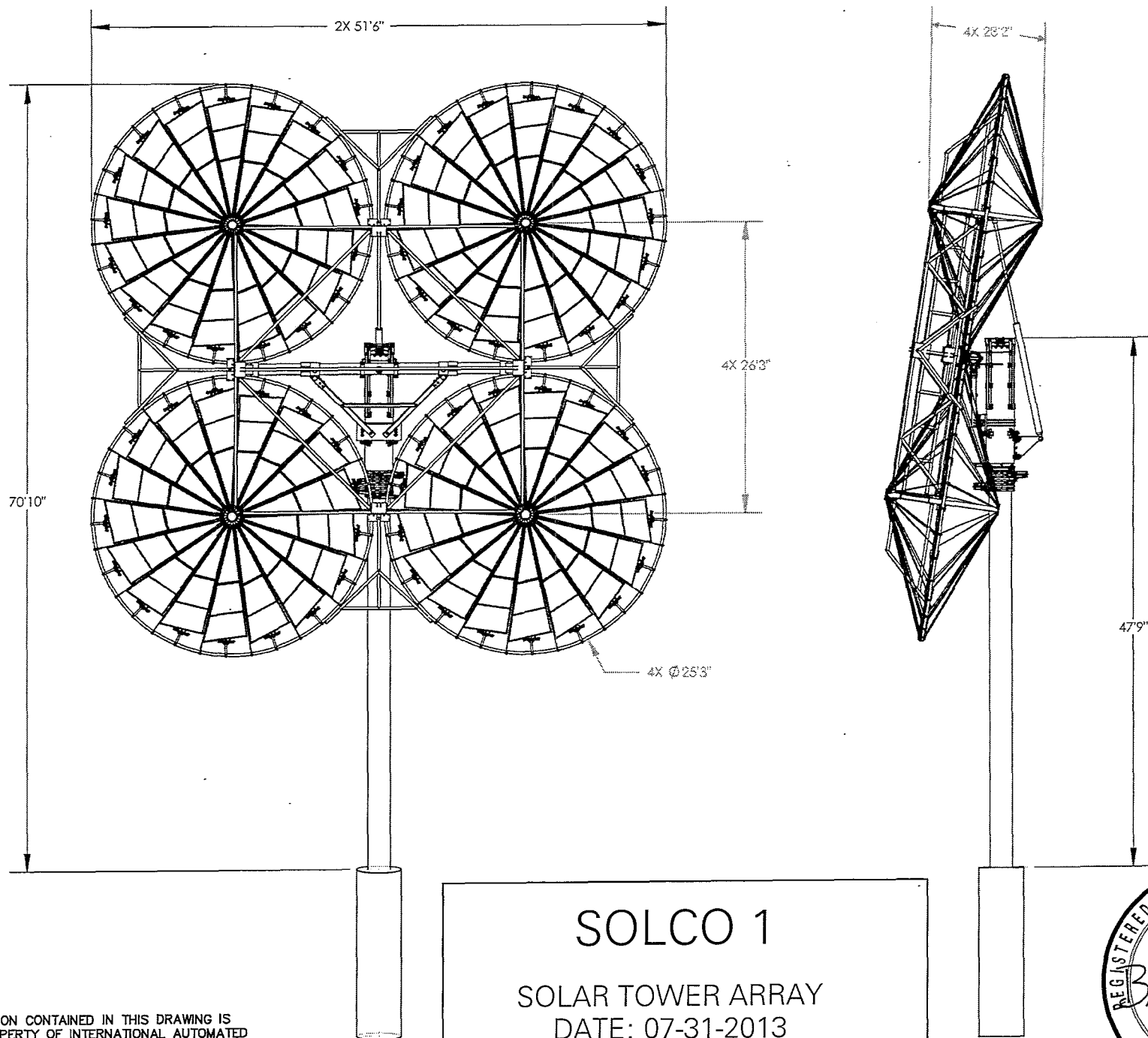


SOLCO 1
 SOLAR TOWER ARRAY
 DATE: 07-31-2013
 TOWER NUMBER: DELTA-006

THE INFORMATION CONTAINED IN THIS DRAWING IS THE SOLE PROPERTY OF INTERNATIONAL AUTOMATED SYSTEMS. ANY REPRODUCTION IN PART OR AS A WHOLE WITHOUT THE WRITTEN PERMISSION OF INTERNATIONAL AUTOMATED SYSTEMS IS PROHIBITED.



14

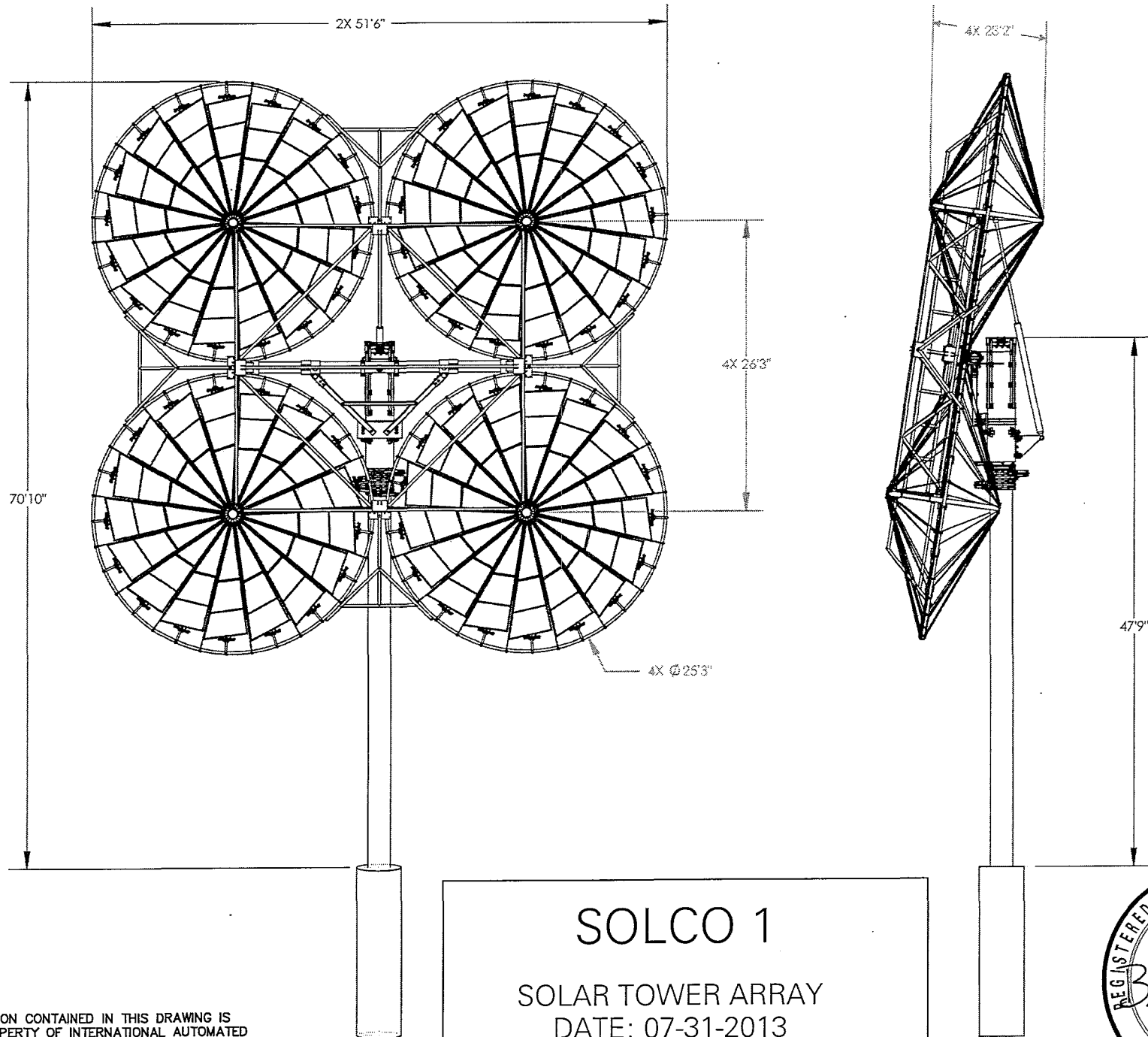


SOLCO 1
 SOLAR TOWER ARRAY
 DATE: 07-31-2013
 TOWER NUMBER: DELTA-007

THE INFORMATION CONTAINED IN THIS DRAWING IS
 THE SOLE PROPERTY OF INTERNATIONAL AUTOMATED
 SYSTEMS. ANY REPRODUCTION IN PART OR AS A
 WHOLE WITHOUT THE WRITTEN PERMISSION OF
 INTERNATIONAL AUTOMATED SYSTEMS IS PROHIBITED.



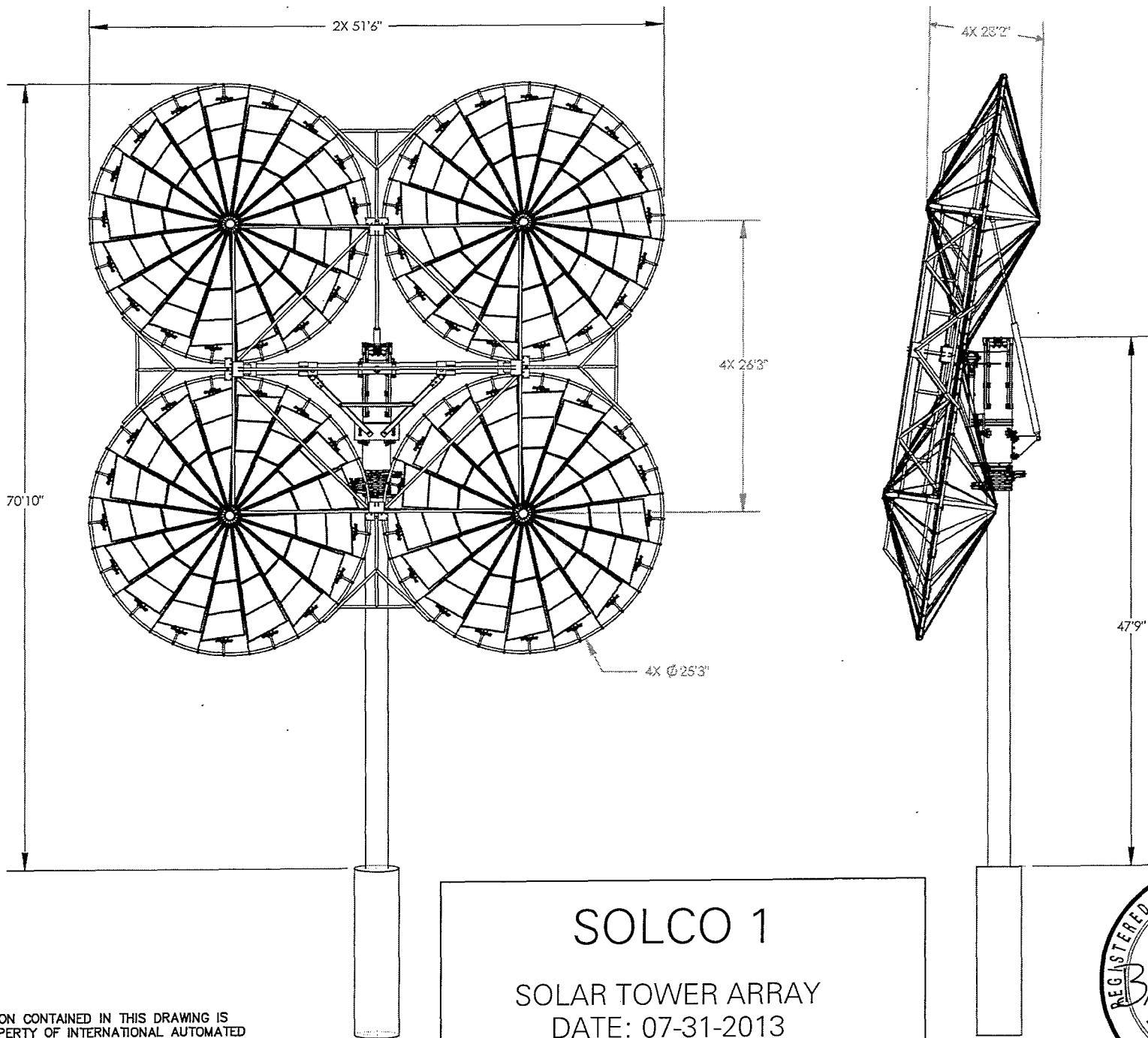
15



SOLCO 1
SOLAR TOWER ARRAY
DATE: 07-31-2013
TOWER NUMBER: DELTA-008

7
THE INFORMATION CONTAINED IN THIS DRAWING IS THE SOLE PROPERTY OF INTERNATIONAL AUTOMATED SYSTEMS. ANY REPRODUCTION IN PART OR AS A WHOLE WITHOUT THE WRITTEN PERMISSION OF INTERNATIONAL AUTOMATED SYSTEMS IS PROHIBITED.



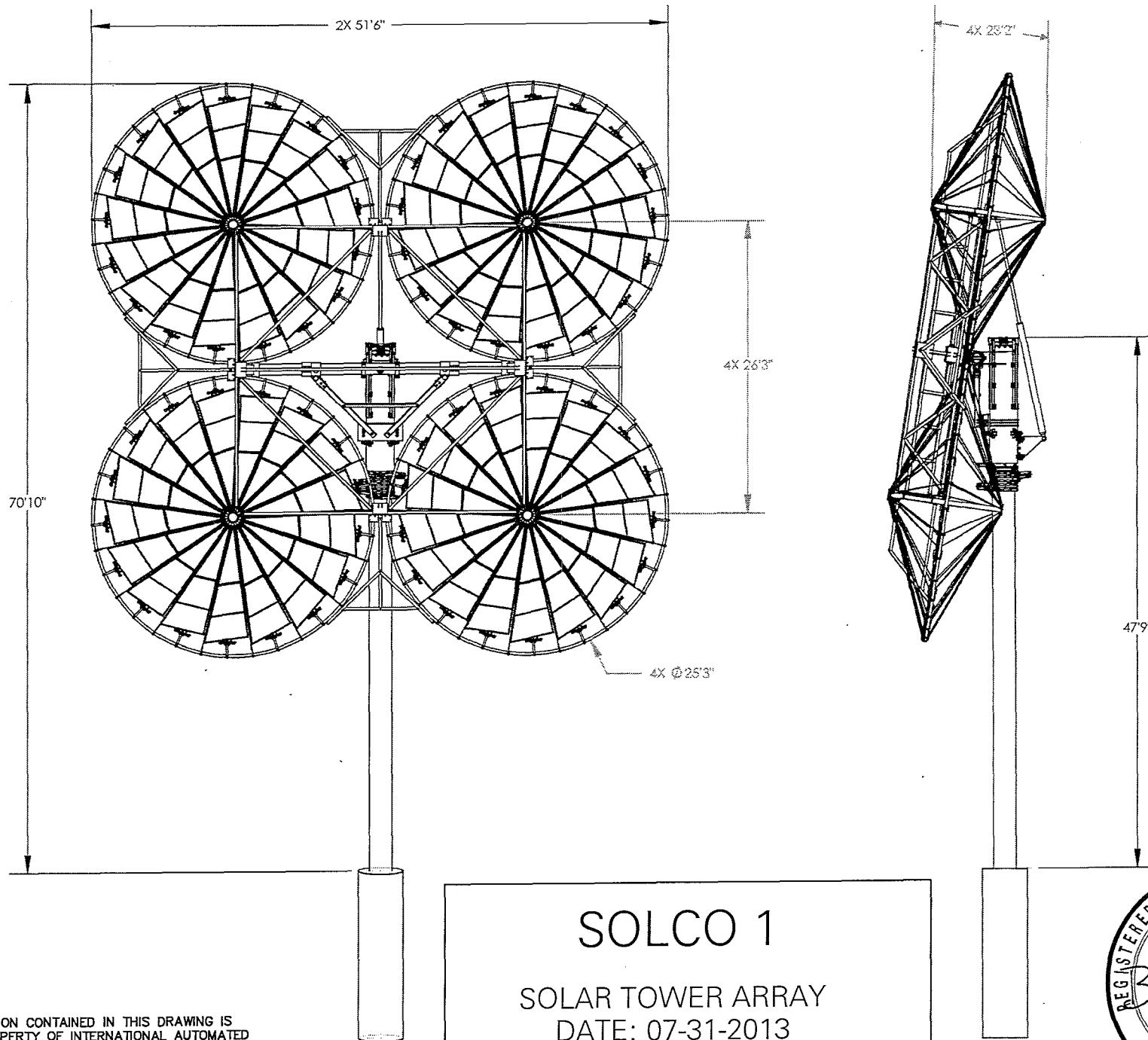


SOLCO 1
 SOLAR TOWER ARRAY
 DATE: 07-31-2013
 TOWER NUMBER: DELTA-009

THE INFORMATION CONTAINED IN THIS DRAWING IS
 THE SOLE PROPERTY OF INTERNATIONAL AUTOMATED
 SYSTEMS. ANY REPRODUCTION IN PART OR AS A
 WHOLE WITHOUT THE WRITTEN PERMISSION OF
 INTERNATIONAL AUTOMATED SYSTEMS IS PROHIBITED.



17



SOLCO 1

SOLAR TOWER ARRAY

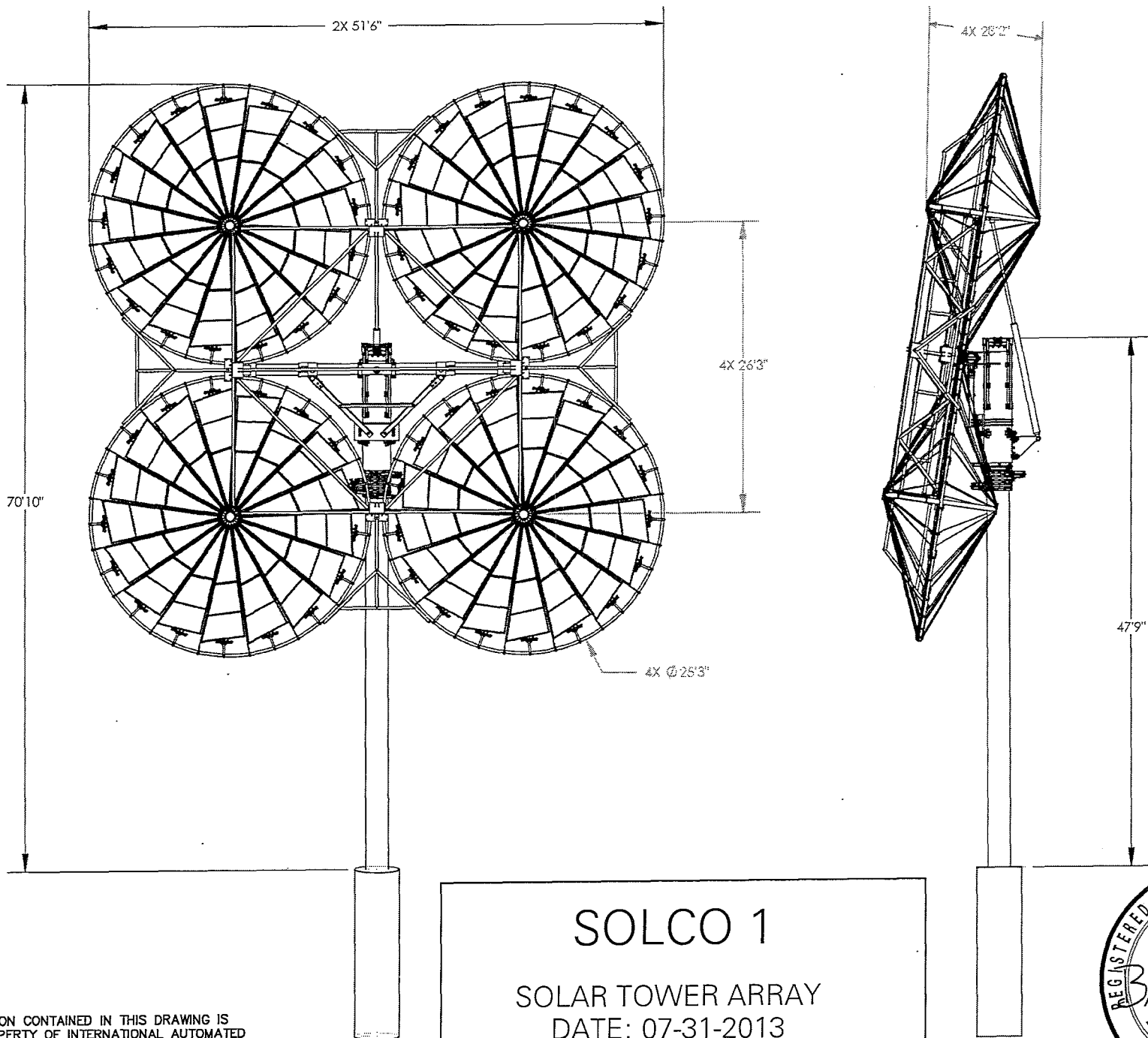
DATE: 07-31-2013

TOWER NUMBER: DELTA-010

THE INFORMATION CONTAINED IN THIS DRAWING IS THE SOLE PROPERTY OF INTERNATIONAL AUTOMATED SYSTEMS. ANY REPRODUCTION IN PART OR AS A WHOLE WITHOUT THE WRITTEN PERMISSION OF INTERNATIONAL AUTOMATED SYSTEMS IS PROHIBITED.



081

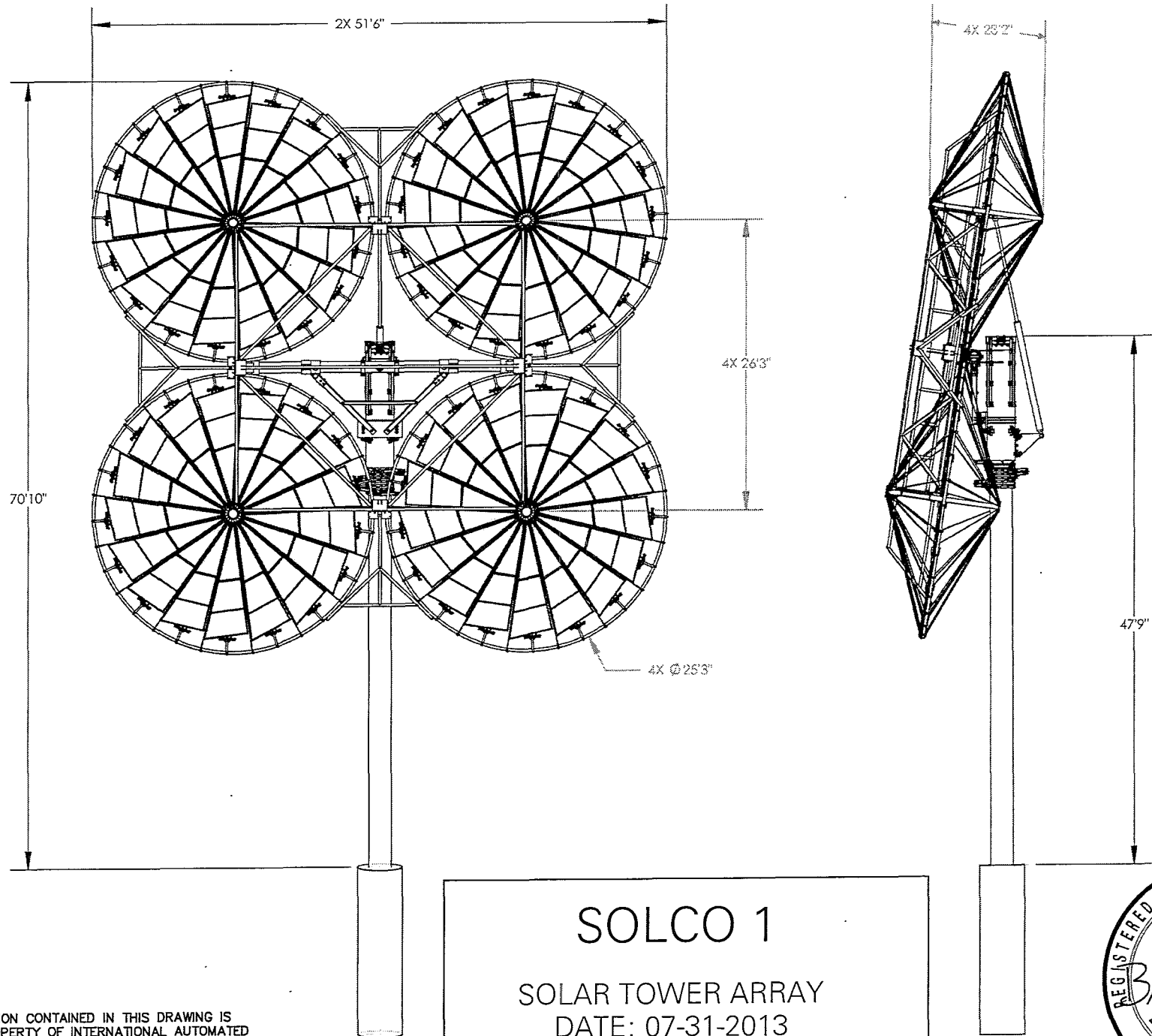


SOLCO 1
 SOLAR TOWER ARRAY
 DATE: 07-31-2013
 TOWER NUMBER: DELTA-011



THE INFORMATION CONTAINED IN THIS DRAWING IS
 THE SOLE PROPERTY OF INTERNATIONAL AUTOMATED
 SYSTEMS. ANY REPRODUCTION IN PART OR AS A
 WHOLE WITHOUT THE WRITTEN PERMISSION OF
 INTERNATIONAL AUTOMATED SYSTEMS IS PROHIBITED.

bl

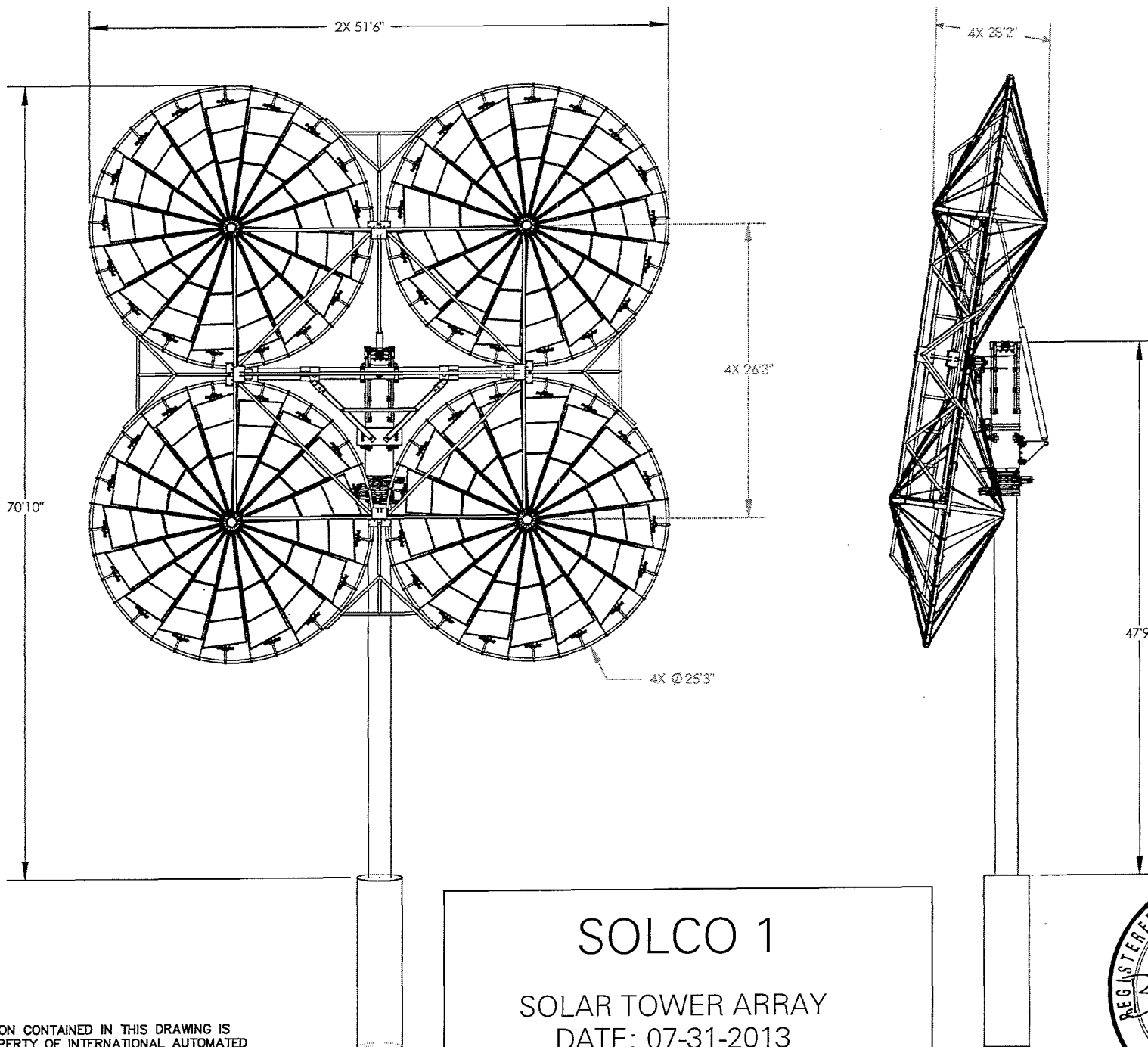


SOLCO 1
 SOLAR TOWER ARRAY
 DATE: 07-31-2013
 TOWER NUMBER: DELTA-012

THE INFORMATION CONTAINED IN THIS DRAWING IS
 THE SOLE PROPERTY OF INTERNATIONAL AUTOMATED
 SYSTEMS. ANY REPRODUCTION IN PART OR AS A
 WHOLE WITHOUT THE WRITTEN PERMISSION OF
 INTERNATIONAL AUTOMATED SYSTEMS IS PROHIBITED.



20

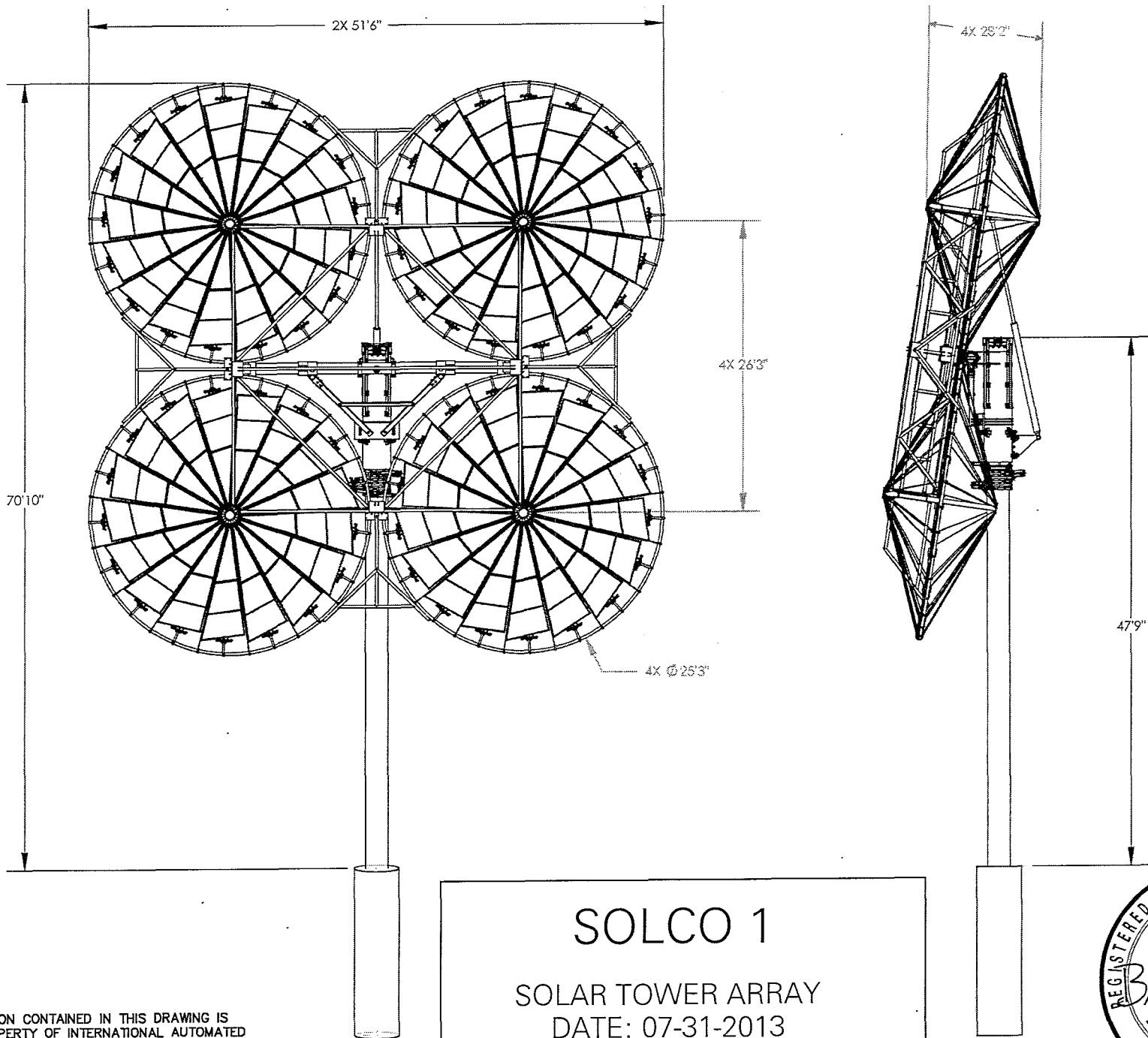


SOLCO 1
 SOLAR TOWER ARRAY
 DATE: 07-31-2013
 TOWER NUMBER: DELTA-013



THE INFORMATION CONTAINED IN THIS DRAWING IS
 THE SOLE PROPERTY OF INTERNATIONAL AUTOMATED
 SYSTEMS. ANY REPRODUCTION IN PART OR AS A
 WHOLE WITHOUT THE WRITTEN PERMISSION OF
 INTERNATIONAL AUTOMATED SYSTEMS IS PROHIBITED.

2-1

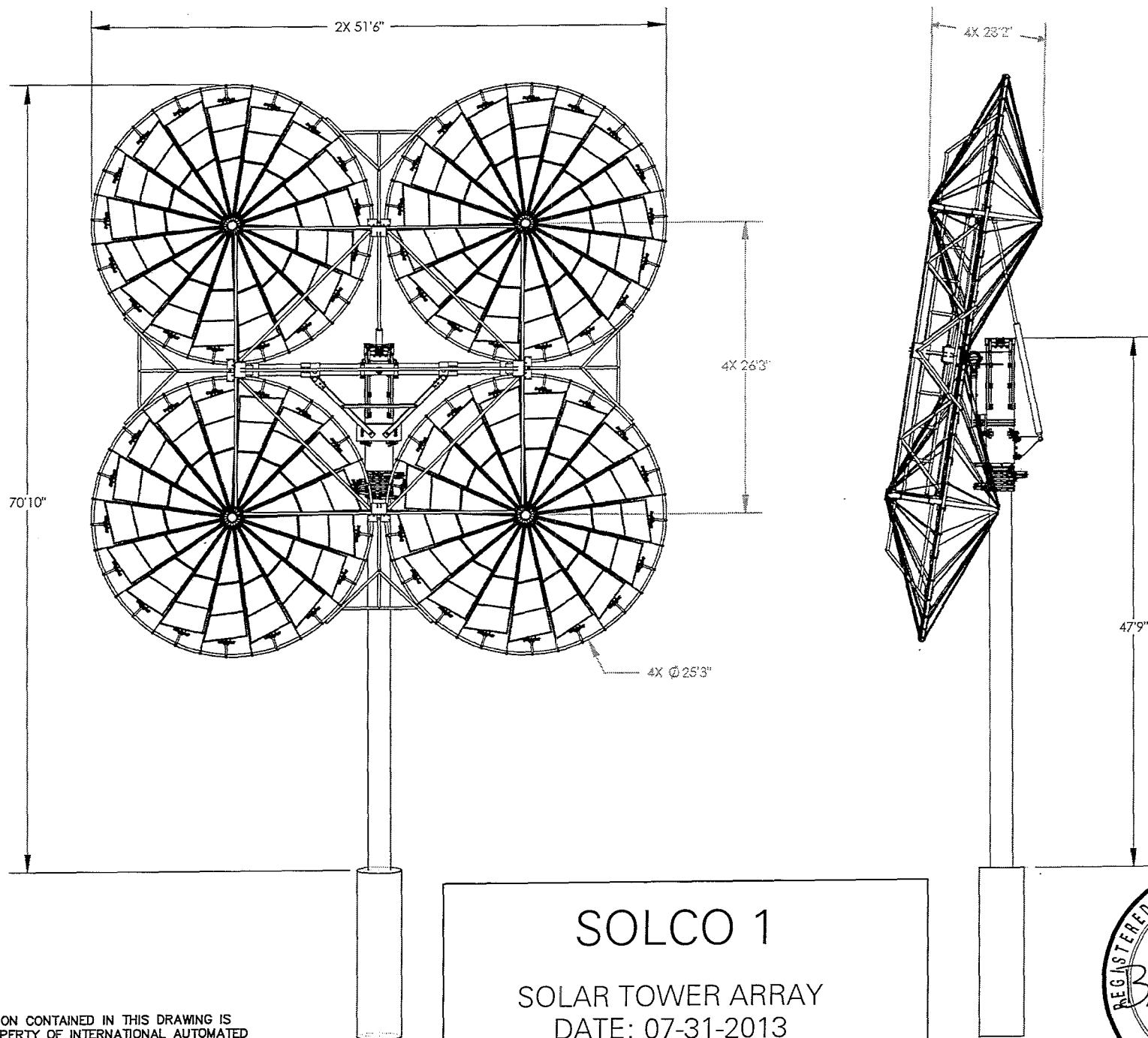


SOLCO 1
SOLAR TOWER ARRAY
DATE: 07-31-2013
TOWER NUMBER: DELTA-014

THE INFORMATION CONTAINED IN THIS DRAWING IS THE SOLE PROPERTY OF INTERNATIONAL AUTOMATED SYSTEMS. ANY REPRODUCTION IN PART OR AS A WHOLE WITHOUT THE WRITTEN PERMISSION OF INTERNATIONAL AUTOMATED SYSTEMS IS PROHIBITED.



22

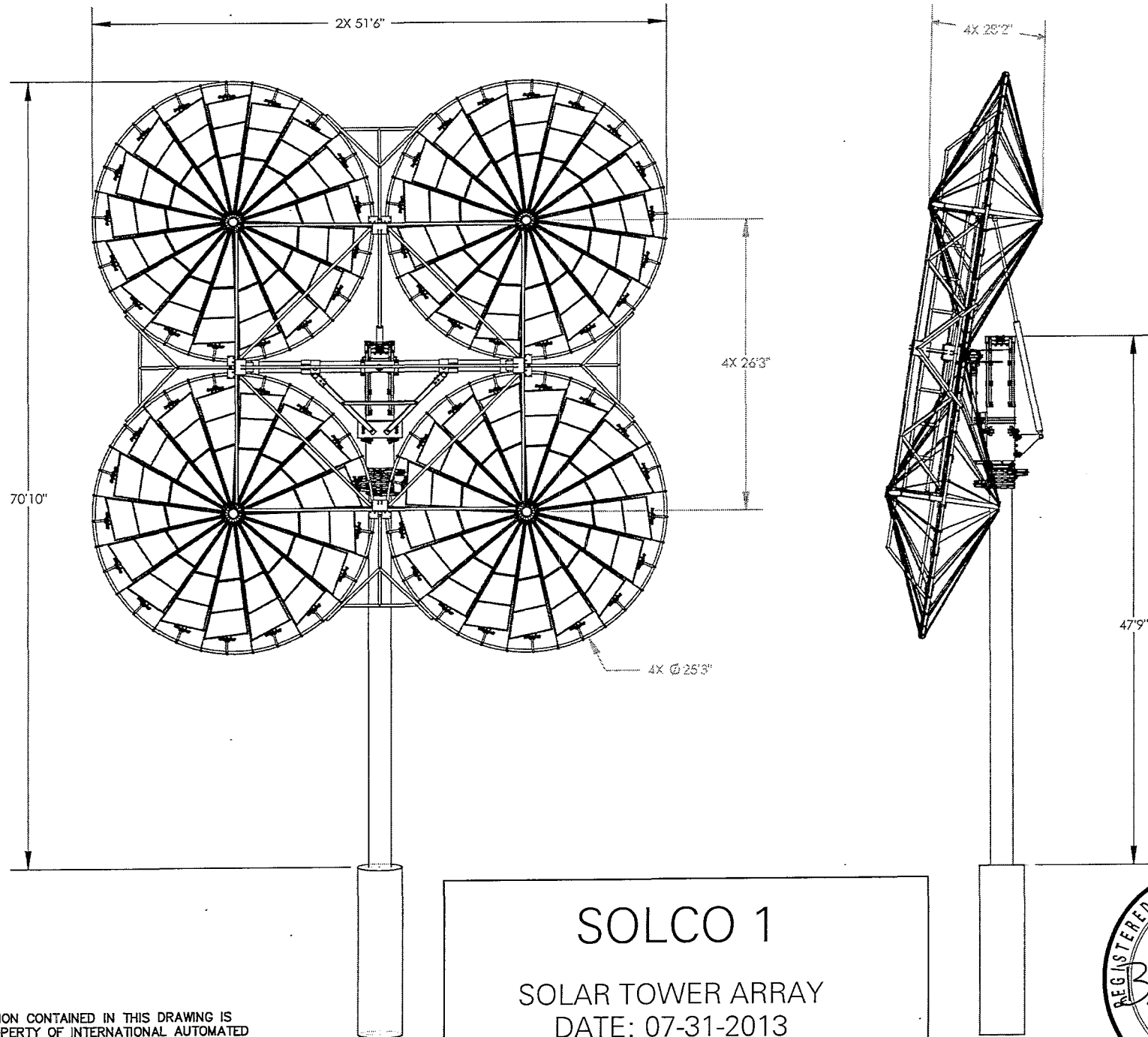


SOLCO 1
 SOLAR TOWER ARRAY
 DATE: 07-31-2013
 TOWER NUMBER: DELTA-015

THE INFORMATION CONTAINED IN THIS DRAWING IS
 THE SOLE PROPERTY OF INTERNATIONAL AUTOMATED
 SYSTEMS. ANY REPRODUCTION IN PART OR AS A
 WHOLE WITHOUT THE WRITTEN PERMISSION OF
 INTERNATIONAL AUTOMATED SYSTEMS IS PROHIBITED.



23

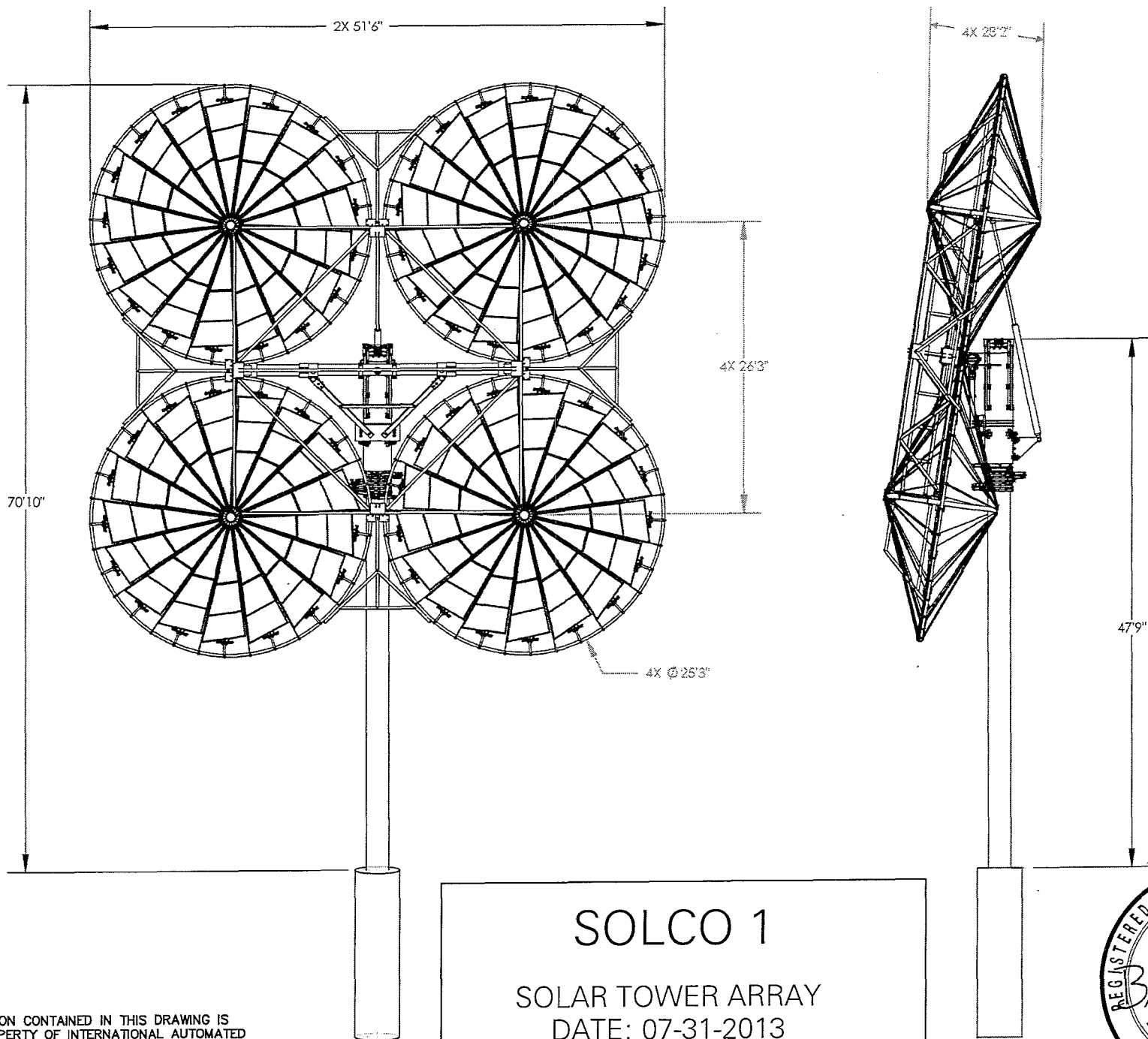


SOLCO 1
SOLAR TOWER ARRAY
DATE: 07-31-2013
TOWER NUMBER: DELTA-016

THE INFORMATION CONTAINED IN THIS DRAWING IS THE SOLE PROPERTY OF INTERNATIONAL AUTOMATED SYSTEMS. ANY REPRODUCTION IN PART OR AS A WHOLE WITHOUT THE WRITTEN PERMISSION OF INTERNATIONAL AUTOMATED SYSTEMS IS PROHIBITED.



24

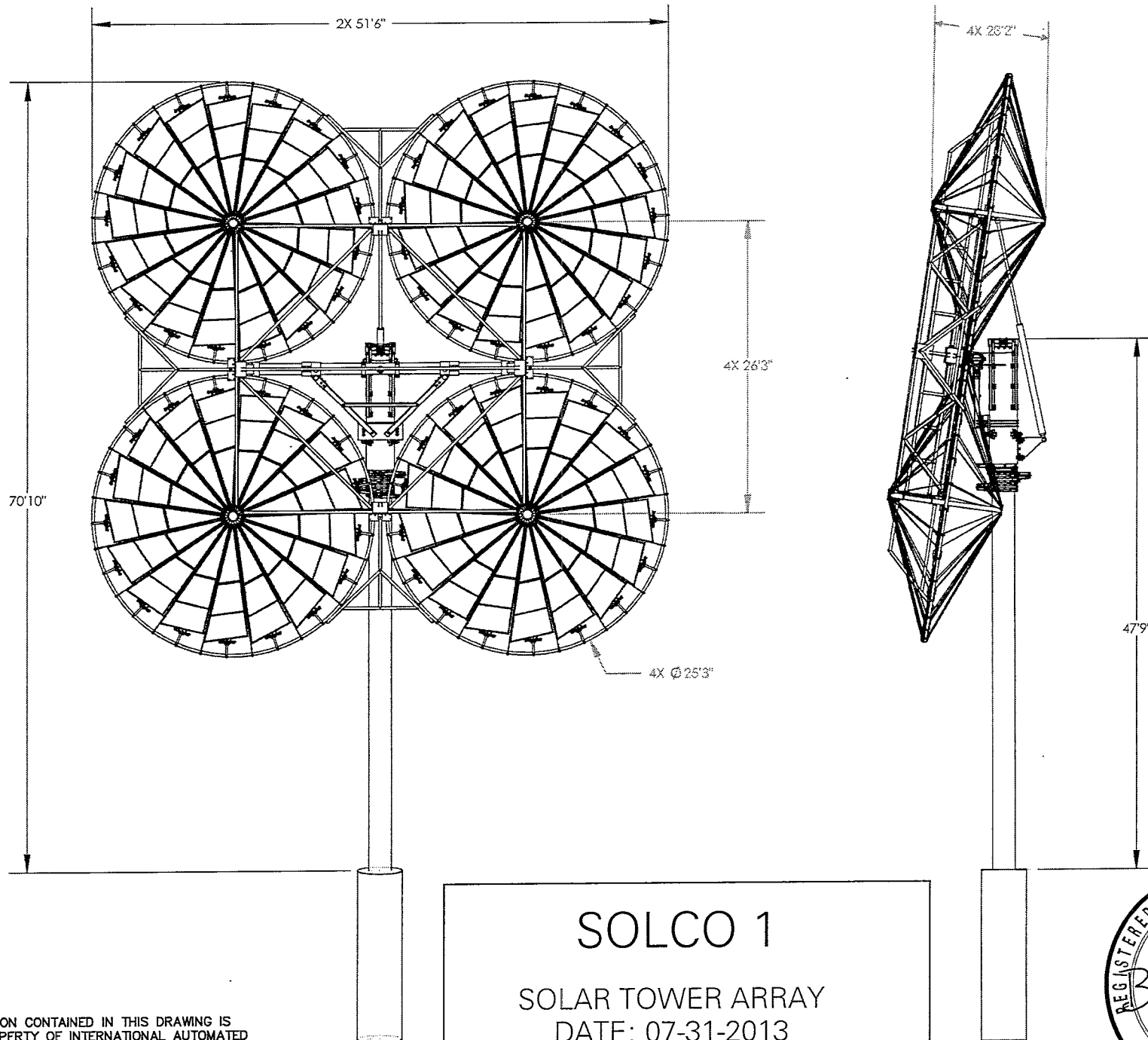


SOLCO 1
SOLAR TOWER ARRAY
DATE: 07-31-2013
TOWER NUMBER: DELTA-017



THE INFORMATION CONTAINED IN THIS DRAWING IS THE SOLE PROPERTY OF INTERNATIONAL AUTOMATED SYSTEMS. ANY REPRODUCTION IN PART OR AS A WHOLE WITHOUT THE WRITTEN PERMISSION OF INTERNATIONAL AUTOMATED SYSTEMS IS PROHIBITED.

25

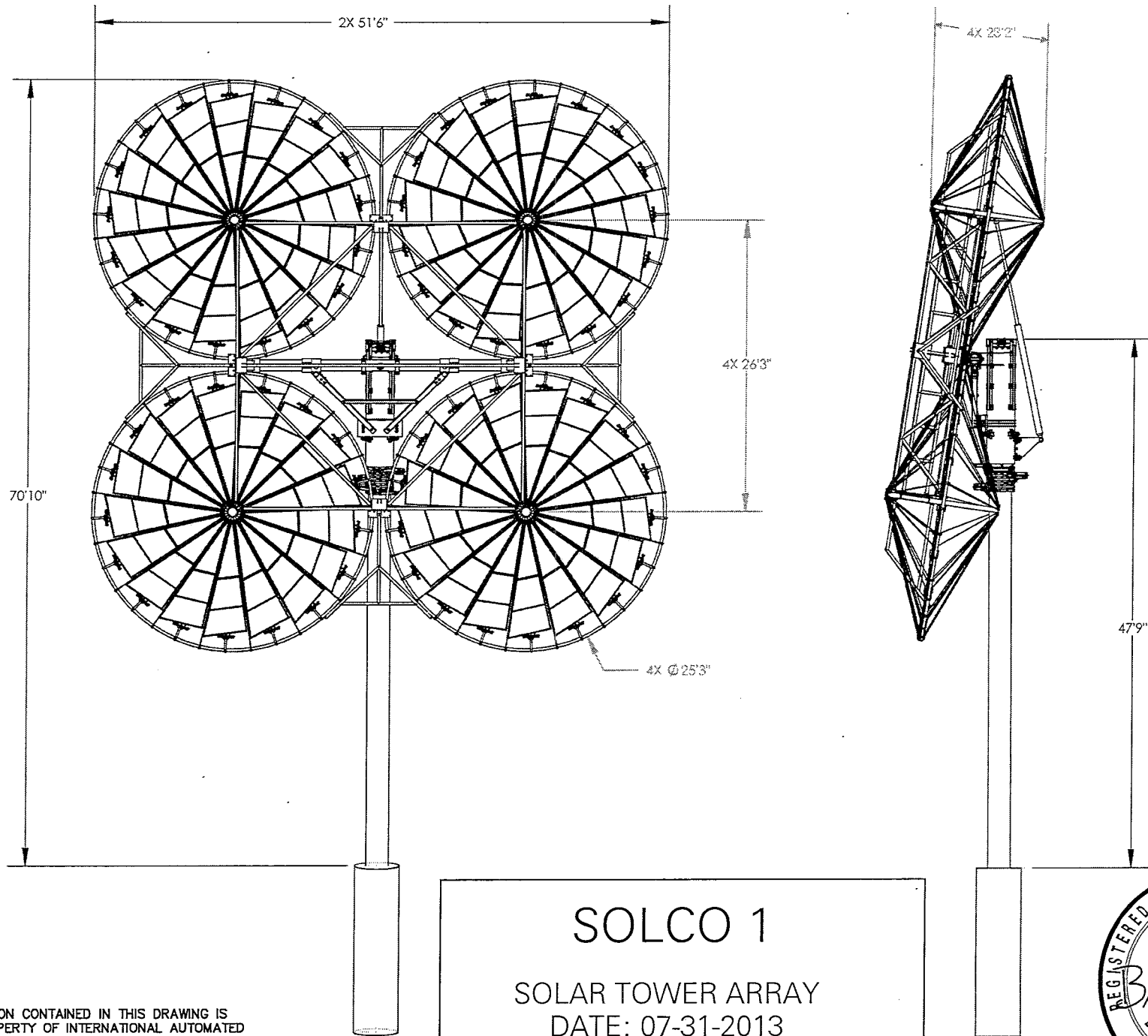


SOLCO 1
SOLAR TOWER ARRAY
DATE: 07-31-2013
TOWER NUMBER: DELTA-018

THE INFORMATION CONTAINED IN THIS DRAWING IS THE SOLE PROPERTY OF INTERNATIONAL AUTOMATED SYSTEMS. ANY REPRODUCTION IN PART OR AS A WHOLE WITHOUT THE WRITTEN PERMISSION OF INTERNATIONAL AUTOMATED SYSTEMS IS PROHIBITED.



26



SOLCO 1
SOLAR TOWER ARRAY
DATE: 07-31-2013
TOWER NUMBER: DELTA-019

THE INFORMATION CONTAINED IN THIS DRAWING IS THE SOLE PROPERTY OF INTERNATIONAL AUTOMATED SYSTEMS. ANY REPRODUCTION IN PART OR AS A WHOLE WITHOUT THE WRITTEN PERMISSION OF INTERNATIONAL AUTOMATED SYSTEMS IS PROHIBITED.



27